

# Automatic valves

## Series SCS, VNR, VSC and VSO

Unidirectional valves VNR

Quick exhaust valves VSC - VSO

Circuit selector SCS

Ports M5, G1/8, G1/4, G1/2 - Cartridge  $\varnothing$  4



Automatic valves are defined as those valves which change their state simply as a result of compressed air being present or absent at their inlets.

### GENERAL DATA

Valve group	automatic valves
Construction	poppet - type
Mounting	in any position
Ports	M5 - G1/8 - G1/4 - G1/2
Operating temperature	0°C ÷ 80°C (with dry air -20°C)
Fluid	filtered air, without lubrication. If lubricated air is used, it is recommended to use ISO VG32 oil. Once applied the lubrication should never be interrupted.

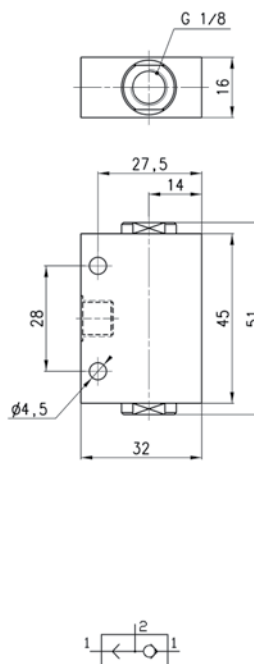
## Circuit selector Series SCS



The circuit selector, Mod. SCS - 668-06, enables two signals coming alternately from two different points to be channelled towards the same point. The selector is mounted by through holes in the body.

Materials used:

- AL body
- Brass bush
- NBR seals
- Delrin poppet



## DIMENSIONS

Min. actuation pressure	Flow rate Qn NI/min	Min. actuation pressure
SCS-668-06	800	0,2 bar

## Unidirectional valves Series VNR

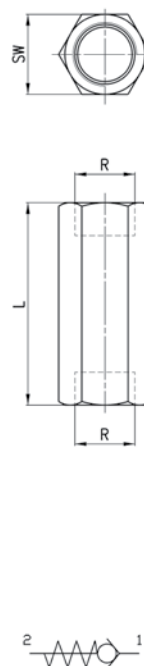


The unidirectional valves in the VNR Series are available with M5, G1/8 and G1/4 ports.

The design of these valves is of the poppet type and this feature allows operation at low pressures both when there is a free flow and during retention.

Materials used:

- Brass body
- NBR seals
- stainless steel spring



## DIMENSIONS

Mod.	R	L	SW	Flow rate Qn NI/min	Min. actuation pressure
VNR-205-M5	M5	25	8	50	1 bar
VNR-210-1/8	G1/8	34	13	600	0,3 bar
VNR-843-07	G1/4	48	17	1400	0,2 bar

## Quick exhaust valves

Quick exhaust valves are commonly used to increase the speed of cylinders or for rapid depressurisation of tanks containing compressed air. The models VSO 425 -M5 and VSO 426 - 04 are specially designed for mounting on solenoid valves and valves incorporating a  $\varnothing 4$  cartridge.

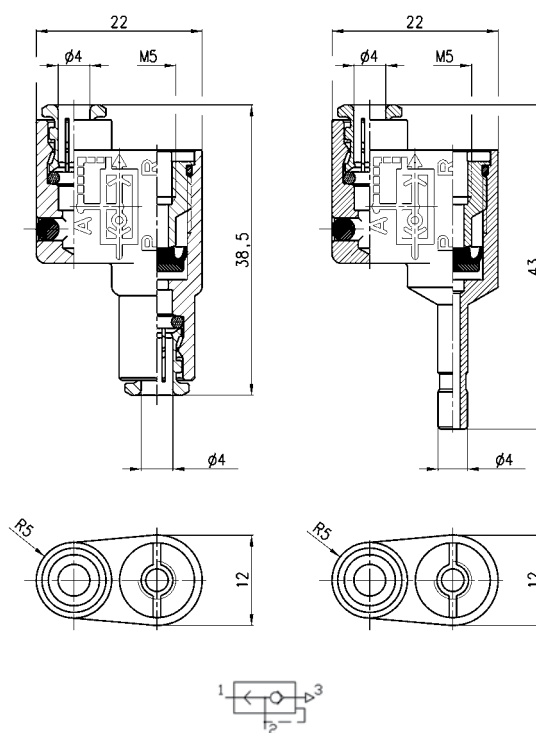
Materials used:

- Brass body
- NBR seal



VSO...-04

VSO...-M5



## DIMENSIONS

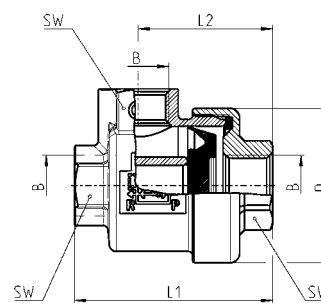
Mod.	Flow rate from P to A Qn Nl/min	Flow rate from A to R Qn Nl/min	Min. actuation pressure
<b>VSO 425-M5</b>	50	100	1 bar
<b>VSO 426-04</b>	50	100	1 bar

## Quick exhaust valves

Quick exhaust valves are commonly used to increase cylinders speed or for rapid depressurization of compressed air tank. We recommend mounting a silencer on the outlet.

Materials used:

- Brass body
- Desmopan seal



## DIMENSIONS

Mod.	B	D	L1	L2	SW	Flow rate from P to A Qn Nl/min	Flow rate from A to R Qn Nl/min	Min. actuation pressure
<b>VSC 588-1/8</b>	1/8	28	36,5	25	14	650	1000	0,5 bar
<b>VSC 544-1/4</b>	1/4	33	42	28,5	17	1100	1900	0,3 bar
<b>VSC 522-1/2</b>	1/2	43	57,5	39,5	24	4500	6300	0,2 bar