

MICRO SWITCH

FREERPORT ILLINOIS, U.S.A
A DIVISION OF HONEYWELL
FED. MFG. CODE 91929

SWITCH-BASIC

CATALOG LISTING

BZ-2RW8255-A2-S

BZ-2RW8255-A2-S

PAGE 1 OF 1

REPLACES

RELEASE NO. PR-6725

DRAWING NUMBER

7

ISSUE

CHECK

REVISIONS

A	CO-39621	T M M	16 DEC 77
B	CO67209	J A P	3 MAY 90
C	CO-73287-J	J A L	22 NOV 93
D	CO-75204B	K D R	1 FEB 94
E	CO-77588	K D R	29 MAR 94
F	CO93346	DLT	11 SEP 98

CHECK

OCT 77

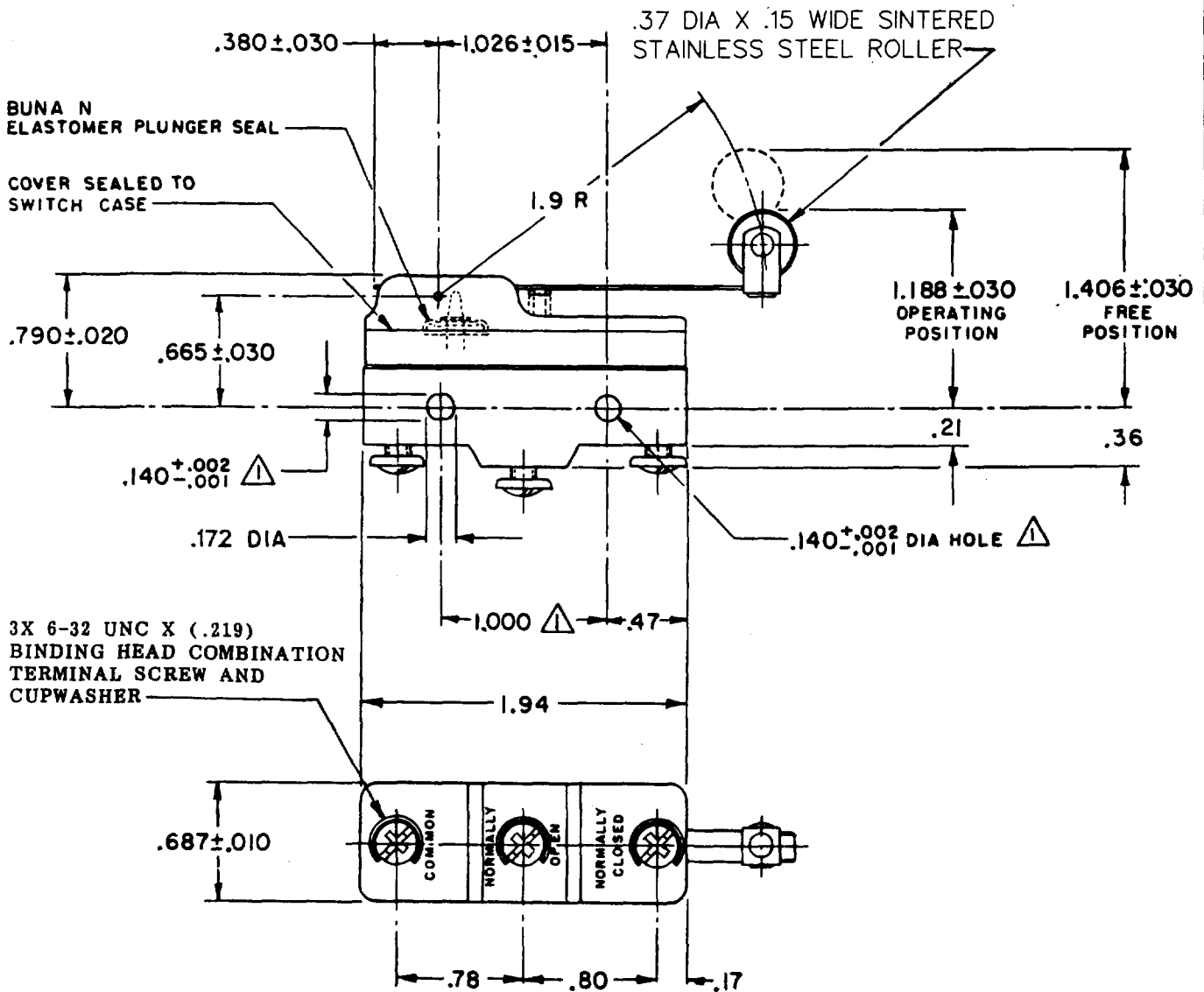
SLH

OCT 77

OCT 77

OCT 77

OCT 77

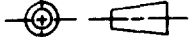


NOTES

- ▲ MOUNTING HOLES WILL ACCEPT PINS OR SCREWS OF .139 MAX DIA ON 1.000 ± .002 CENTERS
- 2 - SEALED CONSTRUCTION PROVIDES SPLASH RESISTANCE

THIS DRAWING COVERS A PROPRIETARY ITEM AND IS THE PROPERTY OF MICRO SWITCH, A DIVISION OF HONEYWELL. THIS DRAWING IS NOT TO BE COPIED OR USED WITHOUT THE APPROVAL OF MICRO SWITCH.

THIRD ANGLE PROJECTION



CHARACTERISTICS
OPERATING FORCE — 3 1/2 OZ MAX
RELEASE FORCE — 3/4 OZ MIN
DIFFERENTIAL TRAVEL — .004-.040
OVERTRAVEL — .156 MIN

ELECTRICAL DATA
CONTACT ARRANGEMENT S P D T
L98 15A 125, 250 OR 480 VAC 1/8 HP 125 VAC, 1/4 HP 250 VAC 1/2A 125 VDC, 1/4A 250 VDC
L288 L299 L306
CE D RJ
16A 250V ~ T85 5E4

SCALE FULL																								
DO NOT SCALE PRINT																								
TOLERANCES																								
APPLY TO DIMENSION UNITS. CONVERSIONS ARE ONLY FOR REFERENCE. UNLESS NOTED, TOLERANCES ARE Z																								
<table border="1"> <tr> <th>DIM.</th> <th>TOL.</th> <th>DIM.</th> <th>TOL.</th> </tr> <tr> <td>mm</td> <td>mm/in</td> <td>in</td> <td>mm/in</td> </tr> <tr> <td>NO PLACES</td> <td>X</td> <td>1/64</td> <td></td> </tr> <tr> <td>ONE PLACE</td> <td>X,X</td> <td>0.4/016</td> <td>X,X 0.8/08</td> </tr> <tr> <td>TWO PLACES</td> <td>X,XX</td> <td>0.18/008</td> <td>X,XX 0.38/016</td> </tr> <tr> <td>THREE PLACES</td> <td>X,XXX</td> <td></td> <td>X,XXX 0.13/005</td> </tr> </table>	DIM.	TOL.	DIM.	TOL.	mm	mm/in	in	mm/in	NO PLACES	X	1/64		ONE PLACE	X,X	0.4/016	X,X 0.8/08	TWO PLACES	X,XX	0.18/008	X,XX 0.38/016	THREE PLACES	X,XXX		X,XXX 0.13/005
DIM.	TOL.	DIM.	TOL.																					
mm	mm/in	in	mm/in																					
NO PLACES	X	1/64																						
ONE PLACE	X,X	0.4/016	X,X 0.8/08																					
TWO PLACES	X,XX	0.18/008	X,XX 0.38/016																					
THREE PLACES	X,XXX		X,XXX 0.13/005																					
DESIGN UNITS																								
<input type="checkbox"/> METRIC <input checked="" type="checkbox"/> US CUSTOMARY																								
WEIGHT .079 LB																								

FORMTEK
FO-52848-A
1 DRAWN