

STANDARD COMPUTER BRACKETS

Designers' Choice



Note: For panel cutout dimensions see page 64

9 PIN	EISA/ISA	<p>CUTOUT TYPE 9</p> <p>1.470</p> <p>1.962 REF.</p>	<p>CAT. NO. 9200-1</p> <p>For Bracket Dimensions Refer To Cat. No. 9200</p>	<p>CUTOUT SCSI 1 50 PIN</p> <p>.088</p> <p>.800</p> <p>1.715 REF.</p>	<p>50 PIN</p> <p>PCI</p> <p>SCSI 1</p> <p>CAT. NO. 9200-6</p> <p>For Bracket Dimensions Refer To Cat. No. 9200</p>
	PCI	<p>CUTOUT TYPE 9</p> <p>1.707</p> <p>2.199 REF.</p>	<p>CAT. NO. 9200-2</p> <p>For Bracket Dimensions Refer To Cat. No. 9200</p>	<p>CUTOUT SCSI 1 68 PIN</p> <p>.088</p> <p>.920</p> <p>2.060 REF.</p>	<p>68 PIN</p> <p>PCI</p> <p>SCSI 1</p> <p>CAT. NO. 9200-7</p> <p>For Bracket Dimensions Refer To Cat. No. 9200</p>
15 PIN	EISA/ISA	<p>CUTOUT TYPE 15</p> <p>2.295</p> <p>2.950 REF.</p>	<p>CAT. NO. 9200-3</p> <p>For Bracket Dimensions Refer To Cat. No. 9200</p>	<p>CUTOUT SCSI 2, 3 OR 4 50 PIN</p> <p>.075</p> <p>1.509</p> <p>2.424 REF.</p>	<p>50 PIN</p> <p>PCI</p> <p>SCSI 2, 3 & 4</p> <p>CAT. NO. 9200-8</p> <p>For Bracket Dimensions Refer To Cat. No. 9200</p>
	EISA/ISA	<p>CUTOUT TYPE 25</p> <p>1.883</p> <p>2.808 REF.</p>	<p>CAT. NO. 9200-4</p> <p>For Bracket Dimensions Refer To Cat. No. 9200</p>	<p>CUTOUT SCSI 2, 3 OR 4 68 PIN</p> <p>.080</p> <p>.982</p> <p>2.122 REF.</p>	<p>68 PIN</p> <p>PCI</p> <p>SCSI 2, 3 & 4</p> <p>CAT. NO. 9200-9</p> <p>For Bracket Dimensions Refer To Cat. No. 9200</p>
SOUND	EISA/ISA	<p>.280 DIA. HOLE (3) PLS</p> <p>CUTOUT TYPE 15</p> <p>1.975</p> <p>1.550</p> <p>.525</p> <p>.335</p> <p>2.404</p> <p>3.060 REF.</p>	<p>CAT. NO. 9204-1</p> <p>For Bracket Dimensions Refer To Cat. No. 9204</p>	<p>.640</p> <p>2.305</p> <p>.480</p> <p>1.765</p> <p>.500</p>	<p>PCI</p> <p>ISDN</p> <p>MODEM</p> <p>CAT. NO. 9203-1</p> <p>For Bracket Dimensions Refer To Cat. No. 9203</p>
	PCI	<p>3.200</p> <p>2.810</p> <p>1.070</p> <p>.585</p> <p>.450 DIA. HOLE (2) PLS</p> <p>.270 DIA. HOLE (2) PLS</p> <p>1.493</p> <p>1.985 REF.</p>	<p>CAT. NO. 9201-1</p> <p>For Bracket Dimensions Refer To Cat. No. 9201</p>	<p>1.043</p> <p>1.445</p> <p>.478</p> <p>.500</p>	<p>EISA/ISA</p> <p>MODEM</p> <p>CAT. NO. 9202-1</p> <p>For Bracket Dimensions Refer To Cat. No. 9202</p>
USB	EISA/ISA or PCI	<p>2.185</p> <p>1.160</p> <p>.530</p> <p>.595</p> <p>.128 DIA. HOLE (4) PLS</p>	<p>CAT. NO. 9200-10</p> <p>For Bracket Dimensions Refer To Cat. No. 9200</p>	<p>2.110</p> <p>1.910</p> <p>1.710</p> <p>.835</p> <p>.650</p> <p>.150 DIA. HOLE (3) PLS</p> <p>.550</p> <p>.302</p>	<p>PCI</p> <p>NETWORK</p> <p>CAT. NO. 9203-2</p> <p>For Bracket Dimensions Refer To Cat. No. 9203</p>

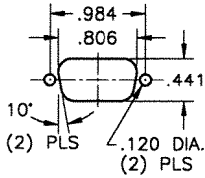


Designers' Choice

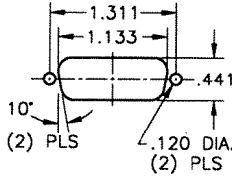
BRACKET CUTOUTS & MARKINGS

STANDARD PANEL CUTOUTS

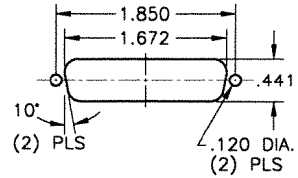
TYPE 9



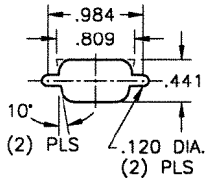
TYPE 15



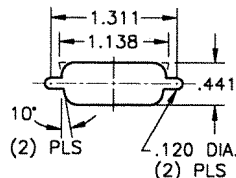
TYPE 25



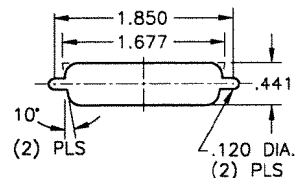
TYPE 9A



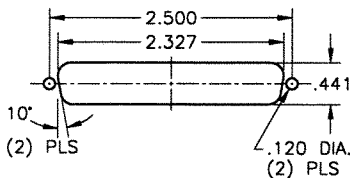
TYPE 15A



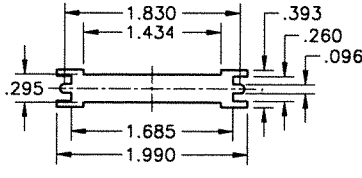
TYPE 25A



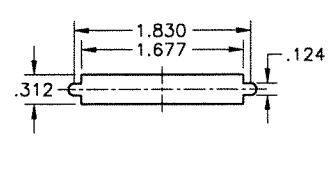
TYPE 37



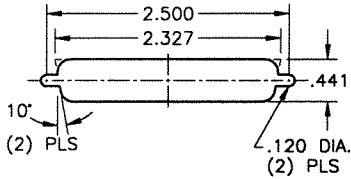
SCSI 1 - 50 PIN



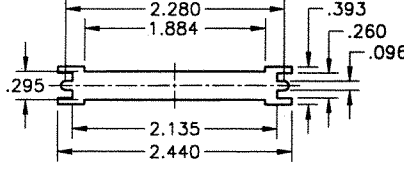
SCSI 2, 3 or 4 - 50 PIN



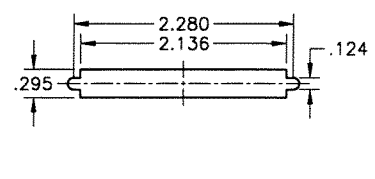
TYPE 37A



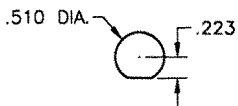
SCSI 1 - 68 PIN



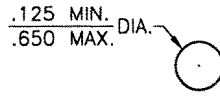
SCSI 2, 3 or 4 - 68 PIN



BNC



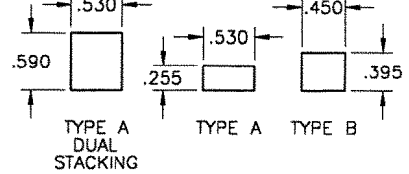
ROUND



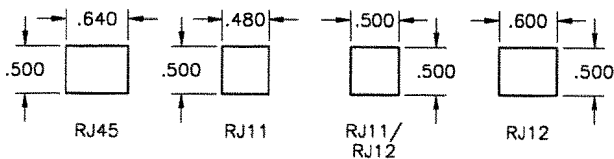
RECOMMENDED SIZES

PS/2 = .650 Stereo Jacks = .280
Mini-Din = .400 to .650 Phono Jacks = .400

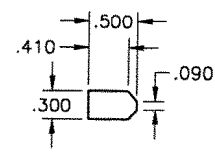
USB



RJ11 - RJ45



IEEE 1394 - "FIREWIRE"



STAMPED IDENTIFICATION MARKINGS

- AUDIO IN
- AUDIO OUT
- LINE IN
- LINE OUT
- VGA IN
- VGA OUT
- SVIDEO IN
- SVIDEO OUT
- VIDEO IN
- VIDEO OUT
- CAMERA IN
- TUNER OUT
- INPUT
- OUTPUT
- MIC
- S/P DIF
- PHONE
- LINE
- HAND SET
- ISDN

