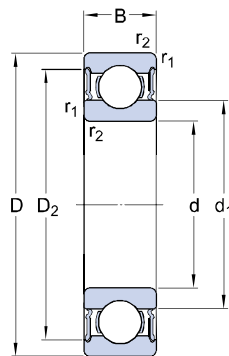




Deep groove ball bearings, single row, stainless steel

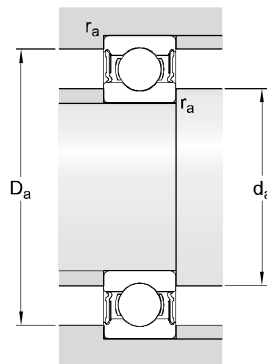
W 6203-2RS1/VP311

Dimensions



d		17	mm
D		40	mm
B		12	mm
d ₁	≈	24.9	mm
D ₂	≈	35.8	mm
r _{1,2}	mi n.	0.6	mm

Abutment dimensions



d _a	mi n.	21	mm
d _a	ma x.	24.5	mm
D _a	ma x.	37.5	mm
r _a	ma x.	0.6	mm

Calculation data

Basic dynamic load rating	C	8	kN
Basic static load rating	C ₀	4.7	kN
Fatigue load limit	P _u	0.2	kN
Limiting speed		12000	r/min
Calculation factor	k _r	0.03	
Calculation factor	f ₀	13.1	

Mass

Mass bearing		0.0647	kg
--------------	--	--------	----