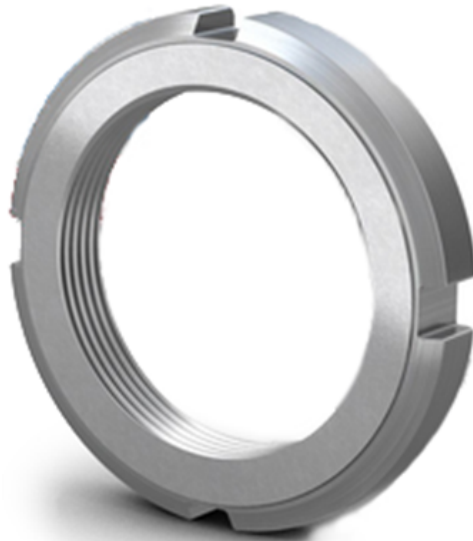


Datasheet

RS PRO Lock Nut M75x2mm

Stock No: 196-4159



Technical Specifications:

Id (mm)	75
Od (mm)	98
Width (mm)	13
Material	Steel

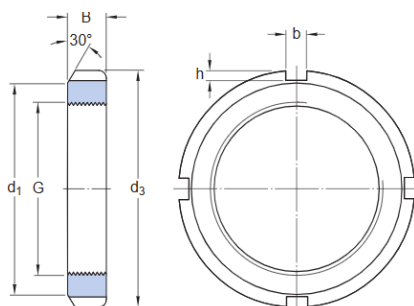
Features & Benefits:

Locknuts are used to locate bearings on to a shaft. Additionally, they can be used to mount bearings with a tapered bore onto a tapered shaft seats and adapter sleeves, and to dismount bearings from withdrawal sleeves.

Lock Nuts with integral locking reduce the cost of the shaft as no keyway is required.

Installation is quicker and easier because no separate device is necessary.

Dimensional line drawings



Dimensiones

G	M75x2	Rosca
d ₃	98 mm	Diámetro exterior
B	13 mm	Ancho
d ₁	90 mm	Diámetro de la cara lateral de fijación
b	8 mm	Ancho de la ranura de fijación
h	3.5 mm	Profundidad de la ranura de fijación