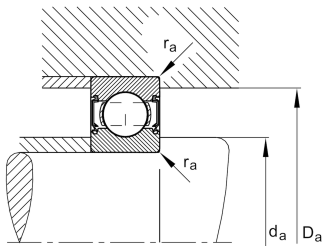
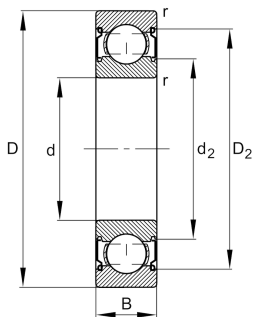


**FAG****6208-C-Z-C3**

## Deep groove ball bearing

Deep groove ball bearing 62...-C-Z, single row, Generation C, shield, steel sheet metal cage

## Technical information



## Your current product variant

Changed internal design	C	GenerationC
Sealing	Z	Non-contact shield on one Side
Cage	JN	Steel sheet metal
Tolerance class	P6	Class6 (P6), better than PN
Dimensional / heat stabilization	SN	Rings dimensional stabilized up to 120°
Lubricant	Without	Bearing not greased
Radial internal clearance	C3 (Group 3)	Internal clearance larger than CN
Bore type	Z	Cylindrical

## Main Dimensions &amp; Performance Data

d	40 mm	Bore diameter
D	80 mm	Outside diameter
B	18 mm	Width
$C_r$	33,500 N	Basic dynamic load rating, radial
$C_{0r}$	17,800 N	Basic static load rating, radial
$C_{ur}$	1,230 N	Fatigue load limit, radial
$n_G$	13,600 1/min	Limiting speed
$n_{gr}$	10,500 1/min	Reference speed
$\approx m$	0.345 kg	Weight



Mounting dimensions

$d_{a\min}$	47 mm	Minimum diameter shaft shoulder
$D_{a\max}$	73 mm	Maximum diameter of housing shoulder
$r_{a\max}$	1 mm	Maximum fillet radius

Dimensions

$r_{\min}$	1.1 mm	Minimum chamfer dimension
$D_1$	67.6 mm	Shoulder diameter outer ring
$D_2$	70.56 mm	Caliber diameter outer ring
$d_1$	51.88 mm	Shoulder diameter inner ring
$d_2$	49.3 mm	Caliber diameter inner ring

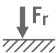





Temperature range

$T_{\min}$	-30 °C	Operating temperature min.
$T_{\max}$	120 °C	Operating temperature max.

Calculation factors

$f_0$	14	Calculation factor
-------	----	--------------------

Characteristics

	Radial load
	Axial load in one direction
	Axial load in two directions
	Grease Lubrication
	Oil Lubrication
	Sealed on one side