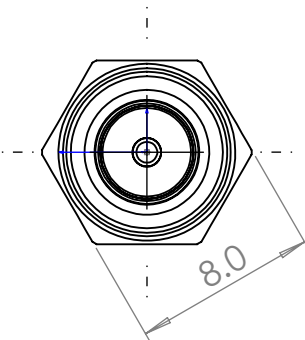
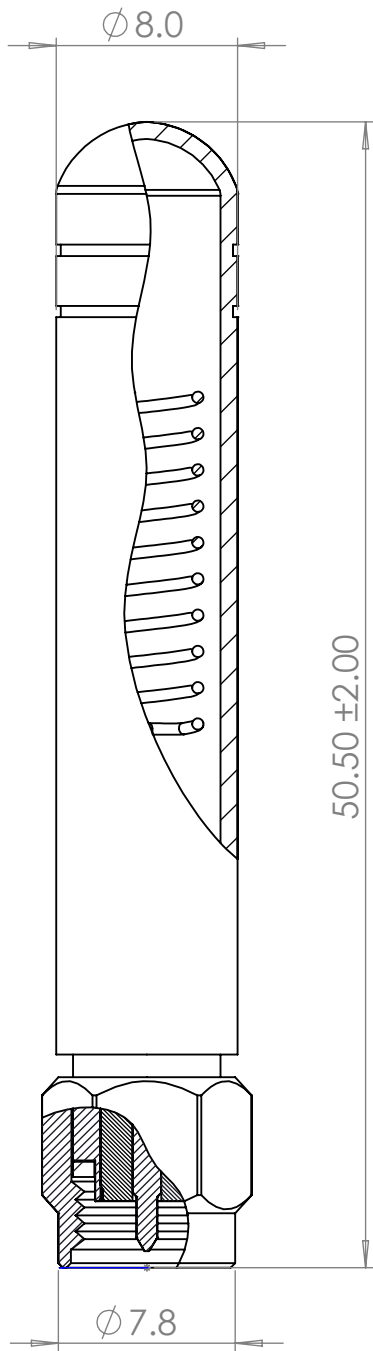


REVISIONS


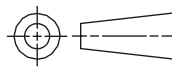
REV	DESCRIPTION	DATE	DWN	APVD
A	PRODUCTION RELEASE	7/22/2024		

DWG NO
C-L001035

THIS DRAWING IS A CONTROLLED DOCUMENT



1. ALL DIMENSIONS ARE IN MILLIMETERS [in].
2. DIMENSIONS APPLY AFTER FINISHING.
3. MANUFACTURE TO BE COMPLIANT WITH EU RoHS DIRECTIVE,USE MATERIALS THAT DO NOT CONTAIN REACH SUBSTANCES OF VERY HIGH CONCERN >1000ppm, AND USE DRC CONFLICT-FREE SOURCED MATERIALS.
4. ANTENNA: FIXED WHIP TYPE:
1. FREQ1: 863MHz - 870MHz
2. FREQ2: 902MHz - 928MHz
3. VSWR: 2.0 MAX
4. LINEAR POLARIZATION
5. 1/4 WAVE TYPE
5. MECHANICAL:
1. RADOME COVER: FLEXABLE TPEE
2. TEMPERATURE: -30°C - +75°C
3. INTERFACE:
1. TYPE SMA PLUG IAW MIL-STD-310B.
2. EXPOSED BRASS HARDWARE TO HAVE GOLD FLASH
3. TORQUE SMA TO .56Nm [5in/Lbs] MAX USING 8mm TORQUE WRENCH
6. PACKAGE ANTENNA INDIVIDUALLY AND PLACE IN LOT BAGS OF 50PC. PLACE 20 LOT BAGS PER CARTON FOR SAFE GROUND OR INTERNATIONAL TRANSPORT.
7. LABEL LOT PACKAGING AND CARTON IAW TEC-107-115 (SECTION 5, 6)

THIS DRAWING IS A CONTROLLED DOCUMENT.		DWN JHAGER 7/22/24		<div>TE Connectivity</div>							
		CHK DC 7/23/24									
DIMENSIONS: mm		TOLERANCES UNLESS OTHERWISE SPECIFIED: 0 PLC ± 2 1 PLC ± .5 2 PLC ± .25 3 PLC 4 PLC ANGLES ± 30'		APVD HARRY C 7/23/24		ANTENNA 868~916 WHIP STYLE SMA GOLD					
	PRODUCT SPEC 108-161079										
	APPLICATION SPEC -										
	SIZE A3										
MATERIAL BRASS TPEE BLACK		FINISH		WEIGHT 5.77 g		CAGE CODE 00779		DRAWING NO C=L001035		RESTRICTED TO -	
CUSTOMER DRAWING						SCALE 3:1		SHEET 1 OF 1		REV A	