

- ◆ Diesel refuelling
- ◆ Container filling/emptying
- ◆ Wash down for car, caravan & boat
- ◆ Spraying/garden watering

*iL500P 12 volt pump*

*iL500P-24 24 volt pump*

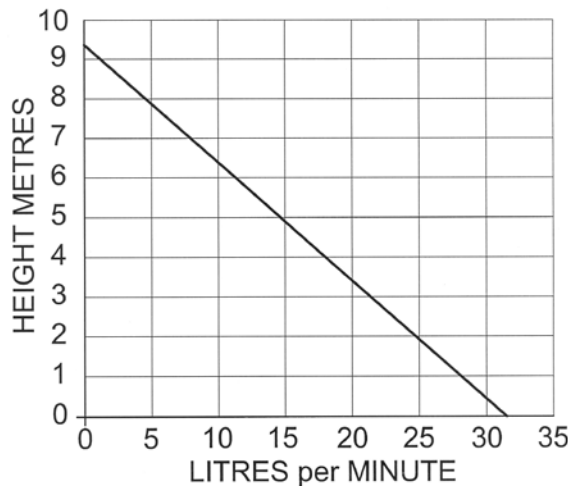
*Filter attached*



*In-line*

**FLOW RATE:**

*Flow rate and current reduces as the height to be pumped increases*

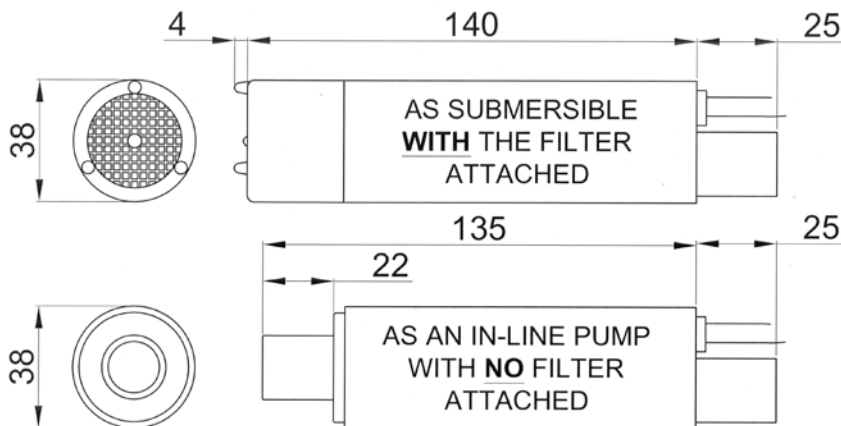


**RECOMMENDED FUSE SIZE:**

*12 volt – 6 amp  
24 volt – 3 amp*

**WEIGHT:** *0.57kg*

**CONNECTIONS:** *for 19mm (3/4") bore hose*



**iL500P<sup>plus</sup>**

**SUBMERSIBLE & IN-LINE**

**DIESEL  
or  
WATER  
TRANSFER  
PUMP**

*iL500P 12 volt d.c*

*iL500P-24 24 volt d.c*

- ◆ Up to 32 litres (7 gallons) per minute
- ◆ Suitable for diesel fuel, water, seawater
- ◆ Temperatures up to 80°C
- ◆ Complete with 4m cable and crocodile clips
- ◆ Intermittent duty



*Not suitable for pumping petrol, light hydrocarbons, non-aqueous solvents*

Doc 695/13