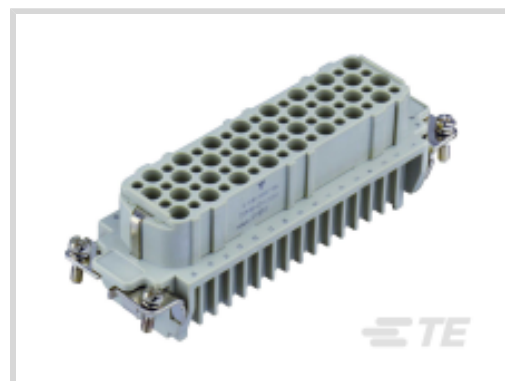




Connectors > Rectangular Connectors > Rectangular Contact Inserts



Contact Type: **Crimp**  
 Pole Configuration: **64+PE**  
 Number of Positions: **64**  
 Sealable: **No**  
 Wire Size: **26 – 14 AWG**

### Features

#### Product Type Features

Product Type	Contact Insert
Sealable	No

#### Configuration Features

Number of Positions	64
---------------------	----

#### Contact Features

Contact Type	Crimp
Pole Configuration	64+PE
Contact Current Rating (Max)	10 A

#### Dimensions

Wire Size	26 – 14 AWG
-----------	-------------

#### Operation/Application

Circuit Application	Power & Signal
---------------------	----------------

### Product Compliance

[For compliance documentation, visit the product page on TE.com>](#)

EU RoHS Directive 2011/65/EU	Compliant
EU ELV Directive 2000/53/EC	Compliant
China RoHS 2 Directive MIIT Order No 32, 2016	No Restricted Materials Above Threshold



EU REACH Regulation (EC) No. 1907/2006

Current ECHA Candidate List: JUL 2019 (201)  
 Candidate List Declared Against: JAN 2019 (197)  
 Does not contain REACH SVHC

EU REACH Regulation (EC) No. 1907/2006

Current ECHA Candidate List: JUL 2019 (201)  
 Candidate List Declared Against: JAN 2019 (197)

Halogen Content

BFR/CFR/PVC Free, but Br/Cl >900 ppm in other sources.

Solder Process Capability

Not reviewed for solder process capability

Product Compliance Disclaimer

This information is provided based on reasonable inquiry of our suppliers and represents our current actual knowledge based on the information they provided. This information is subject to change. The part numbers that TE has identified as EU RoHS compliant have a maximum concentration of 0.1% by weight in homogenous materials for lead, hexavalent chromium, mercury, PBB, PBDE, DBP, BBP, DEHP, DIBP, and 0.01% for cadmium, or qualify for an exemption to these limits as defined in the Annexes of Directive 2011/65/EU (RoHS2). Finished electrical and electronic equipment products will be CE marked as required by Directive 2011/65/EU. Components may not be CE marked. Additionally, the part numbers that TE has identified as EU ELV compliant have a maximum concentration of 0.1% by weight in homogenous materials for lead, hexavalent chromium, and mercury, and 0.01% for cadmium, or qualify for an exemption to these limits as defined in the Annexes of Directive 2000/53/EC (ELV). Regarding the REACH Regulations, TE's information on SVHC in articles for this part number is still based on the European Chemical Agency (ECHA) 'Guidance on requirements for substances in articles' (Version: 2, April 2011), applying the 0.1% weight on weight concentration threshold at the finished product level. TE is aware of the European Court of Justice ruling of September 10th, 2015 also known as O5A (Once An Article Always An Article) stating that, in case of 'complex object', the threshold for a SVHC must be applied to both the product as a whole and simultaneously to each of the articles forming part of its composition. TE has evaluated this ruling based on the new ECHA "Guidance on requirements for substances in articles" (June 2017, version 4.0) and will be updating its statements accordingly.

## Compatible Parts



TE Model / Part #  
 T2020002002-000  
[CDF-0.3](#)

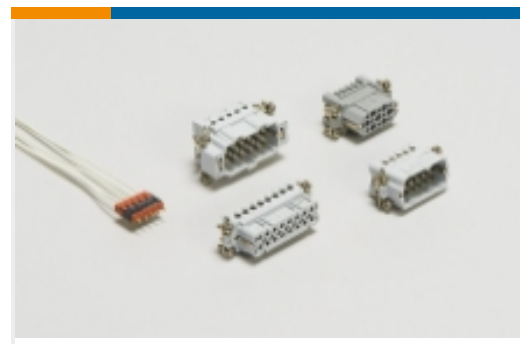


TE Model / Part #  
 T2020002008-000  
[CDF-0.75](#)

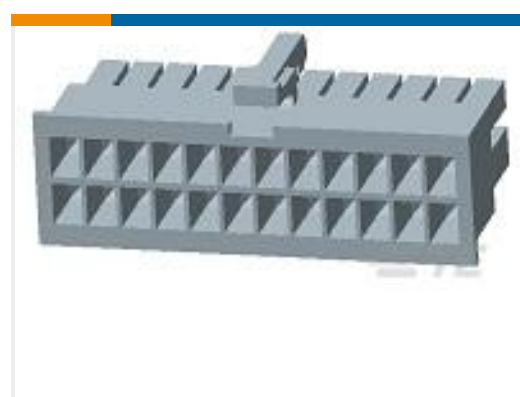
Also in the Series | [HDC HD](#)



Connector Contacts(24)

Rectangular Contact Inserts  
(44)

## Customers Also Bought

TE Model / Part #  
T1210160125-000  
H16B-TS-M25TE Model / Part #  
T2020402101-000  
HD-040-MTE Model / Part #  
T2020642101-000  
HD-064-MTE Model / Part #  
T1240240129-000  
H24B-TGH-PG29TE Model / Part #  
T2020002010-000  
CDF-1.0TE Model / Part #  
T2020001010-000  
CDM-1.0TE Model / Part #  
T2020002015-000  
CDF-1.5TE Model / Part #  
T1739030111-000  
H3A-MTGVB-PG11TE Model / Part #  
T2020402201-000  
HD-040-FTE Model / Part #1-  
1969614-0  
10P RCPT VAL-U-LOK V0

## Documents

### Product Drawings

[HD-064-F](#)

English

### CAD Files

[3D PDF](#)

3D

### Customer View Model

[ENG\\_CVM\\_CVM\\_T2020642201-000\\_B.2d\\_dxf.zip](#)



English

Customer View Model

[ENG\\_CVM\\_CVM\\_T2020642201-000\\_B.3d\\_igs.zip](#)

English

Customer View Model

[ENG\\_CVM\\_CVM\\_T2020642201-000\\_B.3d\\_stp.zip](#)

English

---

### Datasheets & Catalog Pages

[HEAVY DUTY CONNECTORS](#)

English

[Heavy Duty Connectors](#)

English

[HDC Flyers July 2015 \(Chinese\)](#)

[HDC Connectors - July 2015 \(English\)](#)

English

---

### Product Specifications

[Application Specification](#)

English

---

### Product Environmental Compliance

[TE Material Declaration](#)

English

---

### Agency Approvals

[Agency Approval Document](#)

English