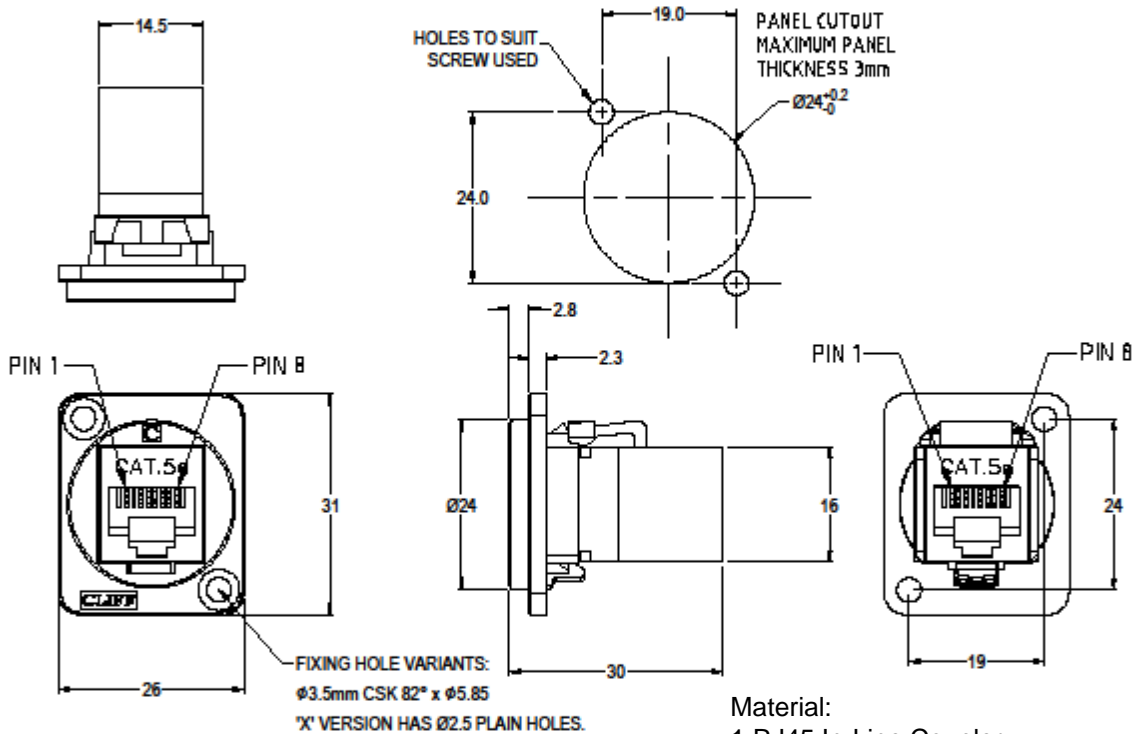
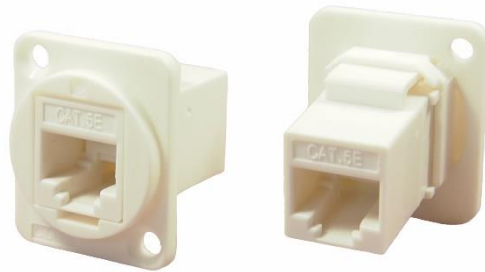


Datasheet

RS PRO CAT5e RJ45 WHITE FEEDTHROUGH CONNECTOR

Stock No: 2035594, 2035615



Performance:

- 1.T568A & T568B wiring.
- 2.Meet ISO/IEC 11801 and EN50173
- 3.Meet ANSI/TIA/EIA 568B.2

rspro.com

Material:

- 1.RJ45 In-Line Coupler: PC/ABS, UL 94V-0
- 2.RJ45 In-Line Coupler Contact: Phosphor Bronze, 3-50 micro inches gold plating over nickel plate.
- 3.PCB: FR4, UL 94V-0
- 4.Frame: Polyamide UL94V-2

Features & Benefits:

- Fits standard XLR Ø24mm cutout.
- No soldering or punch termination. Use standard cable for each connector style.
- Front or rear mounted.
- Low rear profile

General:

Please note: Functionality is affected by cable quality, length and cable wiring configuration.

Other models available:

Part No.

8741226	Cat5e RJ45 Black plastic frame, CSK holes
9075652	Cat5e RJ45 Nickel plated metal frame, CSK holes
9160243	Cat5e RJ45 Black metal frame, CSK holes
8741263	Cat5e RJ45 Black plastic frame, PLAIN holes



rspro.com

