



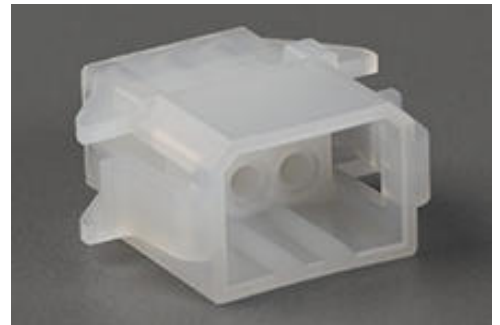
Part Number : [1501772060](#)

Product Description : Standard .062"+ Plug Housing, Dual Row, with Panel Mount Latch, 6 Circuits

Series Number : 150177

Status : Active

Product Category : Connector Housings



Documents & Resources

Drawings

[1501772060_sd.pdf](#)

3D Models and Design Files

[STEP AP242](#)

[SOLIDWORKS](#)

[Creo](#)

Specifications

[1501760001-AS-000.pdf](#)


[PK-150176-001-001.pdf](#)

[1501760001-PS-000.pdf](#)

[1501760001-TS-000.pdf](#)

Product Environment Compliance

Compliance

GADSL/IMDS	Not Relevant
China RoHS	 per SJ/T 11365-2006
EU ELV	Compliant per 2000/53/EC
Low-Halogen Status	Low-Halogen per IEC 61249-2-21
REACH SVHC	Not Contained per D(2025)4165-DC (25 June 2025)
EU RoHS	Compliant per EU 2015/863

[Compliance Statements](#)

- EU RoHS

- REACH SVHC
- Low-Halogen

Industry Documents

- IPC 1752A Class C
- IPC 1752A Class D
- Molex Product Compliance Declaration
- IEC-62474
- chemSHERPA (xml)

Substances of Interest

- PFAS

EU RoHS Certificate of Compliance

Additional Product Compliance Information

Part Details

General

Status	Active
Category	Connector Housings
Series	150177
Description	Standard .062"+ Plug Housing, Dual Row, with Panel Mount Latch, 6 Circuits
Application	Power, Wire-to-Wire
Product Name	Standard .062"+
UPC	889056483247

Agency

UL	E29179
----	--------

Physical

Circuits (maximum)	6
Color - Resin	Natural
Flammability	94V-2
Gender	Plug
Glow-Wire Capable	No
Keying to Mating Part	None
Lock to Mating Part	Yes
Material - Resin	Nylon

Net Weight	1.640/g
Number of Rows	2
Packaging Type	Bag
Panel Mount	Yes
Pitch - Mating Interface	3.68mm
Pitch - Termination Interface	3.68mm
Polarized to Mating Part	Yes
Stackable	No
Temperature Range - Operating	-40° to +105°C

Mates With / Use With

Mates with Part(s)

Description	Part Number
Standard .062"+ Dual Row Receptacle Housings	<u>150179</u>

Use with Part(s)

Description	Part Number
Standard .062"+ Male Terminals	<u>150180</u>