

## Mobile access guide

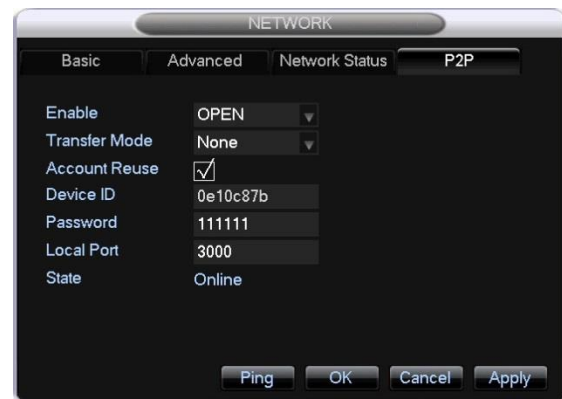
Once the DVR has been installed, you can view the video feeds remotely on your mobile by performing the steps below:

### On the DVR

From the main menu, select **SETUP** then **NETWORK**.



On the **P2P** tab, make a note of your **Device ID** and **Password**, and ensure the unit is **Online**.



### On your mobile

Download the **IMSeeye** app

In **Device List**, select **Add Device**

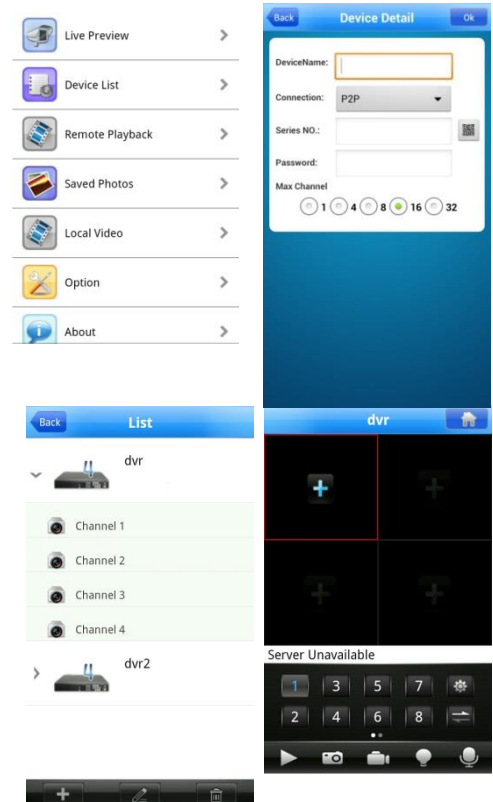
Give the DVR a **name**.

Select **P2P** as the connection type, then enter your **Device ID** and **Password**.

Select the **Number of channels** you DVR supports.

Select **OK**

From the device list, you can now select your DVR and which channel to view.



#### NOTE

This method is based on the general default settings which apply to the majority of routers on the market today. If this method is unsuccessful, please refer to the DVR Instruction Manual for more information.