

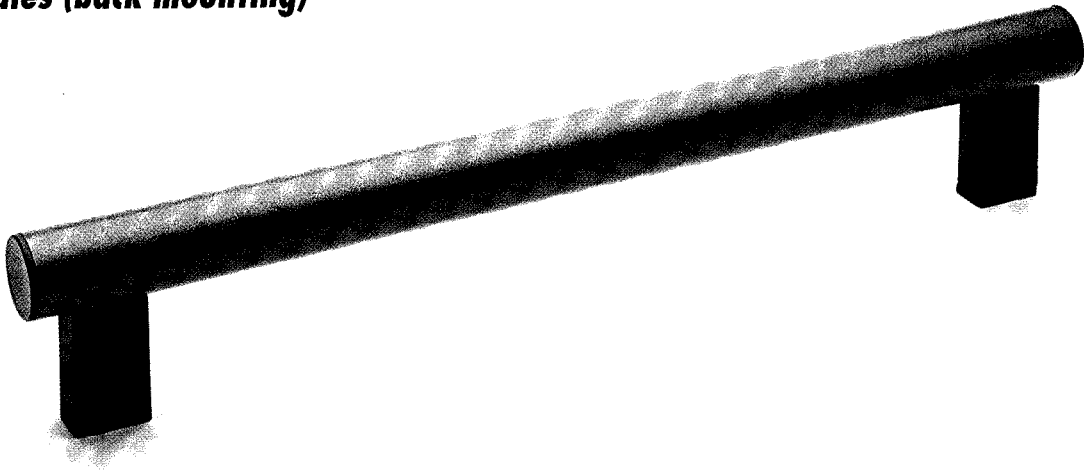
M.1066 BM

ELESA original design

Tubular handles (back mounting)

172

Tubular handles



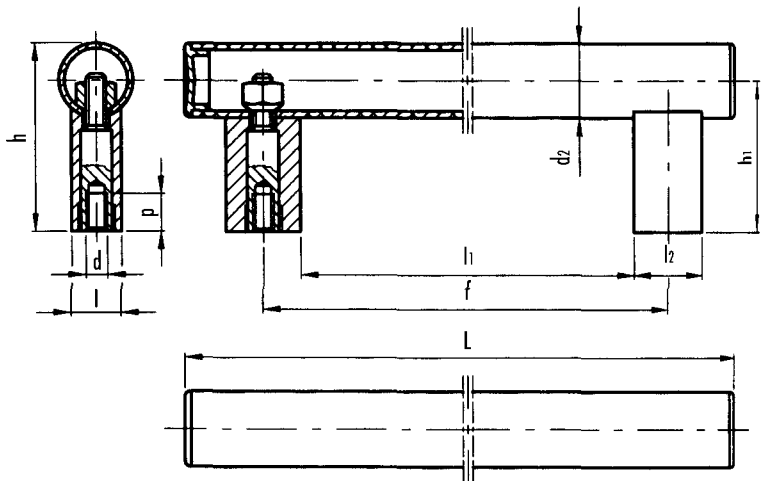
- **Aluminium tube** with coat on an epoxy base highly resistant to wear, scratches and chemical agents. Avoid uninterrupted contact with boiling water or steam. Colour metallflake graphite.
- Special matte reinforced polyamide technopolymer **handle shanks**. Colour graphite (similar to RAL 7043).
- Zinc plated steel special assembling **screws** and brass special nuts.
- Matte technopolymer tube **end caps**. Colour graphite, matte finish.

On request and for sufficient quantities, the tube can be supplied with the following options:

- different lengths
- other colours
- matte anodised finish
- in stainless steel



This product has been awarded for its "design" by the international jury of "Design 1994 - Stuttgart".



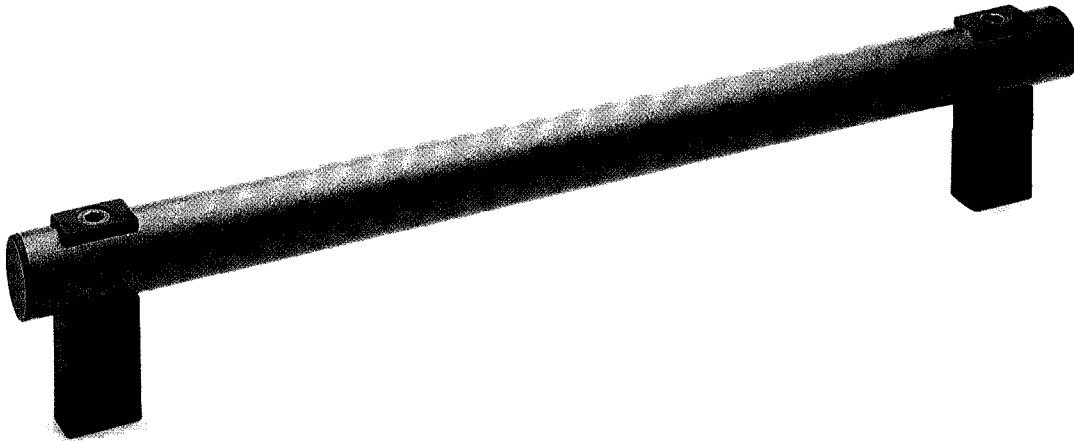
Elesa Standard		Main dimensions								Mounting holes		Weight
Code	Description	L	f	h	l	l1	l2	h1	d2	d	p	grams
37801	M.1066 BM/30-200	265	200±1			170				M8	15	240
37806	M.1066 BM/30-250	315	250±1			220						260
37811	M.1066 BM/30-300	365	300±1			270						280
37816	M.1066 BM/30-400	465	400±1	75	18	370	30	60	30			320
37821	M.1066 BM/30-500	565	500±1			470						360
37826	M.1066 BM/30-600	665	600±1			570						380



Tubular handles (front mounting)

173

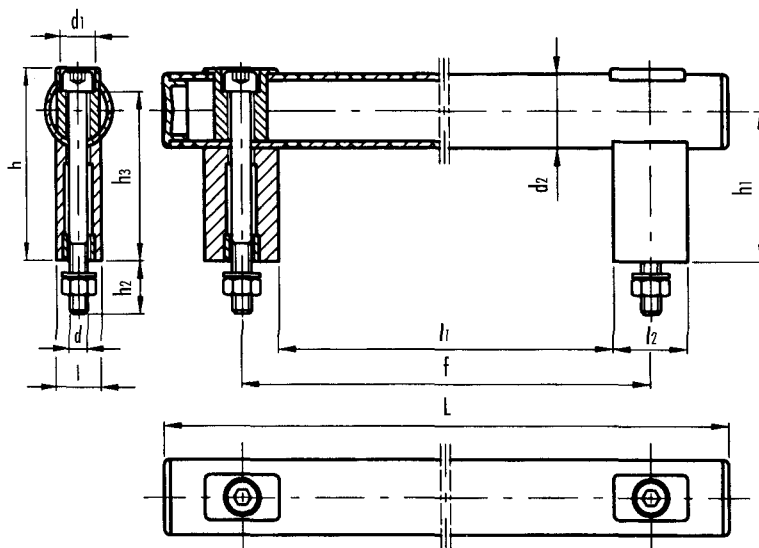
Tubular handles



- **Aluminium tube** with coat on an epoxy base highly resistant to wear, scratches and chemical agents. Avoid uninterrupted contact with boiling water or steam. Colour metallflake graphite.
- Special matte reinforced polyamide technopolymer **handle shanks** and upright plates. Colour graphite (similar to RAL 7043).
- Matte technopolymer tube **end caps**. Colour graphite, matte finish.
- Burnished steel socket **head screws** M8x90, zinc plated steel nuts and washers.
- Brass guide screw **bushes**.

On request and for sufficient quantities, the tube can be supplied with the following options:

- different lengths
- other colours
- matte anodised finish
- in stainless steel



Elesa Standard		Main dimensions								Screws				Weight
Code	Description	L	f	h	l	l1	l2	h1	d2	d	d1	h2	h3	grams
37851	M.1066 FM/30-200	265	200±1			170								270
37856	M.1066 FM/30-250	315	250±1			220								290
37861	M.1066 FM/30-300	365	300±1			270								310
37866	M.1066 FM/30-400	465	400±1	77	18	370	30	60	30	M8	13	21	69	350
37871	M.1066 FM/30-500	565	500±1			470								390
37876	M.1066 FM/30-600	665	600±1			570								430