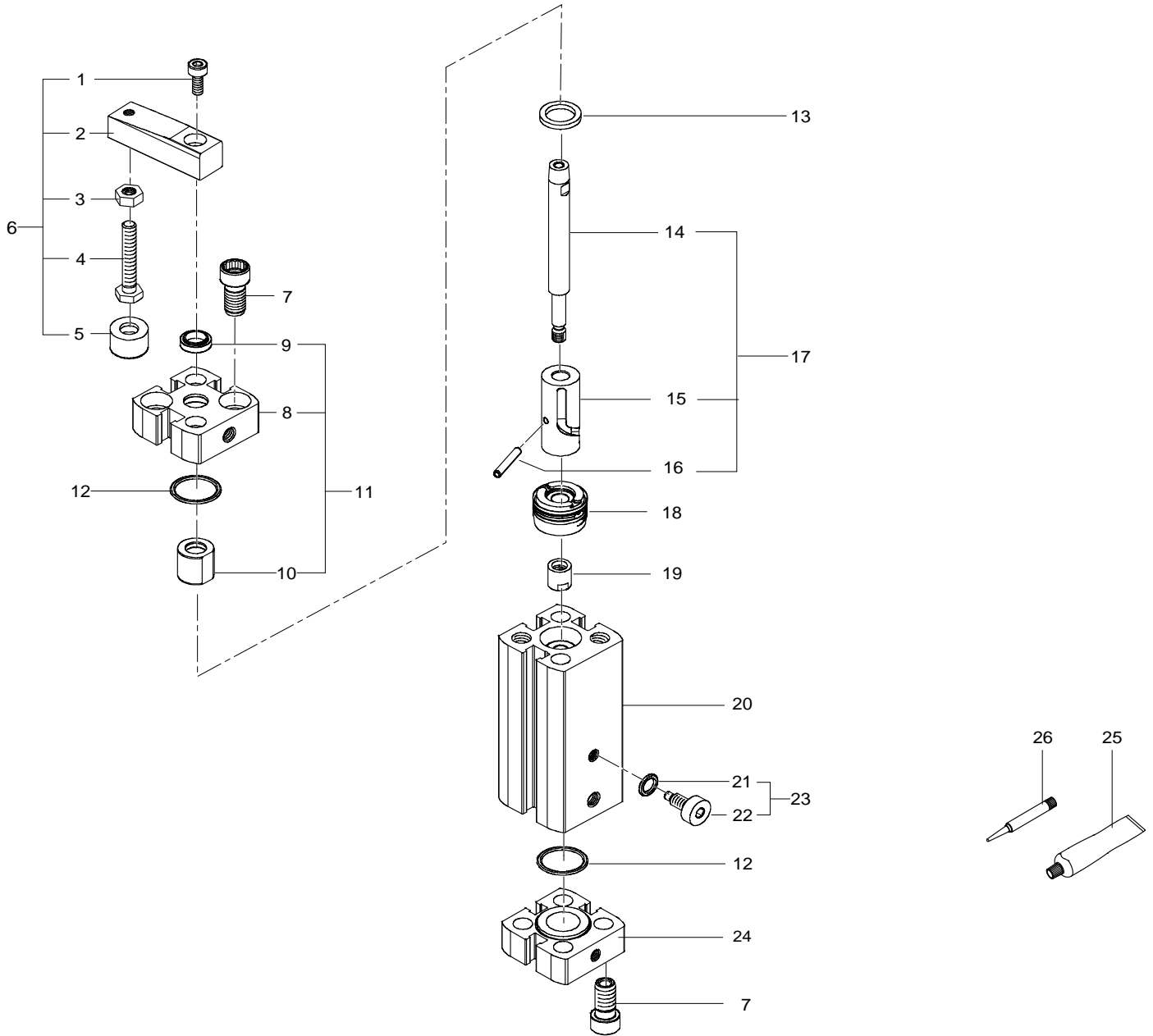


535443 CLR-25-10-R-P-A Linear/swivel clamp - Series: All



535443 CLR-25-10-R-P-A Linear/swivel clamp - Series: All

Pos.	Part no.	Type	Note	Qty.	Unit
A	673618	CLR-25-...-P-A Set of wearing parts	Spare parts: 5, 9, 12, 13, 18, 21, 25, 26	1	PC
1	200685	ISO 4762-M6X16-10.9 Socket head screw	Tightening torque 10.0 Nm / 7.4 lbf ft	1	PC
2		CLR-20/25 Clamping finger	Not available separately, see position 6	1	PC
3	200718	DIN 934-M6-8 Hex nut	Tightening torque 0.5 Nm / 0.4 lbf ft	1	PC
4	672298	M6X35 Hexagon head screw		1	PC
5	671070	11.5X15X10 Cover cap		1	PC
6	535553	CLR-20/25-FS Clamping arm		1	PC
7	658855	ADN-20/25 flange screw	Use locking compound. See position 26 Tightening torque 9 Nm / 6.6 lbf ft	4	PC
8		CLR-25 Bearing cap	Not available separately, see position 11	1	PC
9	359749	WIFC1-12X16,5X4-TPE-U Wiper seal	Grease using during assembly. See position 25	1	PC
10		CLR-25 Bearing	Not available separately, see position 11	1	PC
11	669811	CLR-25 Bearing cap module		1	PC
12		B-25X1-N-NBR70 O-ring ISO3601	Not available separately, see position A Grease using during assembly. See position 25	2	PC
13		CLR-20/25 Cushioning	Not available separately, see position A	1	PC
14		IRA-12-S0093,5-A9IK Piston rod	Not available separately, see position 17	1	PC
15		CLR-25-10 Guide sleeve	Not available separately, see position 17 Grease using during assembly. See position 25	1	PC
16		DIN 7344-4X22 Spring pin	Not available separately, see position 17	1	PC
17	677727	CLR-25-10 Piston rod module		1	PC
18		BA-K10D-025-A Complete piston	Not available separately, see position A Grease using during assembly. See position 25	1	PC
19	709442	DSNU-25 Nut	Tightening torque 7 Nm / 5.2 lbf ft	1	PC
20		CLR-25-10 Cylinder barrel	Not available	1	PC
21		B-7,5X1,5-N-NBR70 O-ring ISO3601	Not available separately, see position 23+999 Grease using during assembly. See position 25	1	PC
22		CLR-25 Guide pin	Not available separately, see position 23 Use locking compound. See position 26	1	PC
23	669842	CLR-25 Pin module	Tightening torque 6 Nm / 4.4 lbf ft	1	PC
24		CLR-25 Bearing cap module	Not available	1	PC
25	684474	LUB-KC1 SILIKONFREI 20ML Lubricating grease		1	PC
26	8181256	CYBERBOND TM44 TB1ML Adhesive bonding agent		1	PC