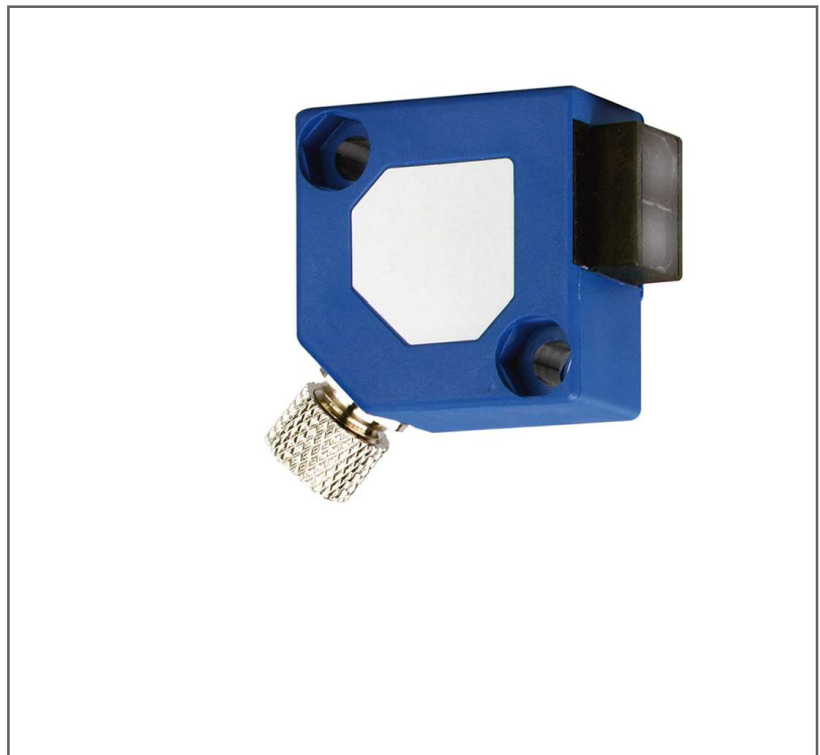


Features

- Operating distance of 4,000 mm
- High switching frequency of 1,000 Hz
- Polarized light, insensitive to reflective surfaces
- Glass window, easy to clean
- Excellent resistance to environmental influences thanks to polyurethane potting of the electronic module
- Sensitivity adjustment by means of built-in 12-turn potentiometer
- High degree of protection: IP 67

RS PRO Photoelectric Sensor

RS Stock No.: 0360265



RS PRO is the own brand of RS. The RS PRO Seal of Approval is your assurance of professional quality, a guarantee that every part is rigorously tested, inspected, and audited against demanding standards. Making RS PRO the Smart Choice for our customers.

Product Description

- Operating distance of 4,000 mm
- High switching frequency of 1,000 Hz
- Polarized light, insensitive to reflective surfaces
- Glass window, easy to clean
- Excellent resistance to environmental influences thanks to polyurethane potting of the electronic module
- Sensitivity adjustment by means of built-in 12-turn potentiometer
- High degree of protection: IP 67

General Specifications

Detection Type	Reflex
Sensing/Detection Range	4000 mm
Operating Distance	0... 4000mm
Standard Sensing Object	Reference reflector LXR-0000-084
Light Source	Red LED
Sensing Distance Adjustment	Potentiometer
Output Type	PNP / light-ON+dark-ON
Response Time	100 msec
Connection/Terminal Type	4-pin S12
Indicator	LED
Minimum Operating Temperature	-25°C
Maximum Operating Temperature	+55°C

Electrical Specifications

Operating Supply Voltage	10 ... 36 VDC
Current Consumption	≤ 200 mA
Voltage Drop	≤ 2,0 V bei / à / at 200 mA
Maximum Switching Frequency	≤ 1'000 Hz
Reverse Polarity Protection	YES
Overload Protection	YES
Short Circuit Protection	YES

Mechanical Specifications

Body Style	Block
Mounting Type	Screw
Housing Material	PBTP (Crastin)
Lens/Face Material	Glass
Dimensions	30 x 30 x 15 mm
Width / Diameter	15 mm
Length	30 mm
Depth	30 mm
Weight	18 g
Shock Resistance	IEC 60947-5-2
Vibration Resistance	IEC 60947-5-2

Protection Category

IP Rating	IP67
-----------	------

Approvals

Compliance/Certifications	CE
---------------------------	----

