



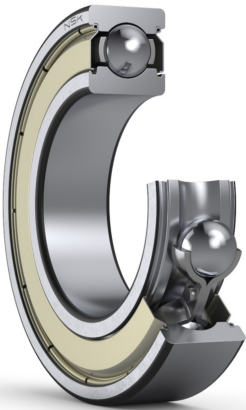
# PRODUCT DATASHEET

Datasheet creation date: 2025/07/08 2:29 (UTC)



## 6310ZZ

### Single-Row Deep Groove Ball Bearings



#### Boundary Dimensions

d	50	mm	Bore diameter
D	110	mm	Outside diameter
B	27	mm	Width
r (min.)	2	mm	Chamfer dimension

#### Basic Load Ratings

Cr	68000	N	Basic dynamic load rating
C0r	38500	N	Basic static load rating

#### Speeds

Grease	7100	min-1	Grease lubrication
--------	------	-------	--------------------

#### Abutment and Fillet Dimensions

da (min.)	59	mm	Diameter of shaft abutment
da (max.)	68	mm	Diameter of shaft abutment
Da (max.)	101	mm	Diameter of housing abutment
ra (max.)	2	mm	Radius of shaft or housing fillet

#### Calculation factors

fo	13.2		Factor
----	------	--	--------

#### Additional information

z	8		Number of Balls
Dw	19.05	mm	Ball Diameter

#### Mass

Mass approx.	1.06	kg	Mass approx.
--------------	------	----	--------------

