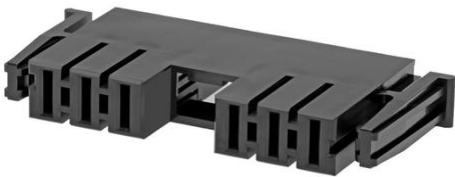




Part Number : [1725103612](#)
Product Description : EXTreme Ten60Power Wire-to-Board Receptacle Housing, 12 Signal Circuits, 6 Power Circuits
Series Number : 172510
Status : Active
Product Category : Connector Housings



Documents & Resources

Drawings

[1725103612 sd.pdf](#)
[PK-172510-0001-001.pdf](#)

3D Models and Design Files


[STEP AP242](#)
[SOLIDWORKS](#)
[Creo](#)

Specifications

[PS-173693-001-001.pdf](#)

Product Environment Compliance

Compliance

GADSL/IMDS	Not Relevant
China RoHS	 per SJ/T 11365-2006
EU ELV	Not Relevant
Low-Halogen Status	Not Low-Halogen per IEC 61249-2-21
REACH SVHC	Not Contained per D(2025)4165-DC (25 June 2025)
EU RoHS	Compliant per EU 2015/863

Compliance Statements

- EU RoHS

- REACH SVHC
- Low-Halogen

Industry Documents

- IPC 1752A Class C
- IPC 1752A Class D
- Molex Product Compliance Declaration
- IEC-62474
- chemSHERPA (xml)

Substances of Interest

- PFAS

EU RoHS Certificate of Compliance

Additional Product Compliance Information

Part Details

General

Status	Active
Category	Connector Housings
Series	172510
Description	EXTreme Ten60Power Wire-to-Board Receptacle Housing, 12 Signal Circuits, 6 Power Circuits
Application	Power, Signal, Wire-to-Board
Keyword	Ten60
Product Name	EXTreme Ten60Power
UPC	889056280662

Physical

Circuits (maximum)	18
Color - Resin	Black
Gender	Receptacle
Glow-Wire Capable	No
Keying to Mating Part	Yes
Lock to Mating Part	Yes
Material - Resin	PBT
Net Weight	14.880/g
Number of Rows	1, 3
Packaging Type	Tray

Panel Mount	No
Pitch - Mating Interface	2.54mm, 7.50mm
Polarized to Mating Part	Yes
Stackable	No
Temperature Range - Operating	-40° to +105°C

Mates With / Use With

Mates with Part(s)

Description	Part Number
EXTreme Ten60Power Wire-to-Board Right-Angle Plug Assembly, 3 Power Circuit, 12 Signal Circuits, 3 Power Circuit	<u>1724530612</u>

Use with Part(s)

Description	Part Number
EXTreme Ten60Power Female Crimp Terminals	<u>173693</u>
EXTreme Ten60Power Terminal Position Assurance (TPA) Retainers	<u>46708</u>
EXTreme Ten60Power Signal Housings	<u>46709</u>
SL Female Terminals	<u>70058</u>