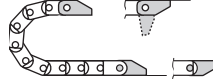




**Polymer, one-piece**

- One-piece mounting bracket
- Corrosion-resistant
- Available preassembled
- Inner and outer attachment possible
- Available with or without strain relief tiwrap plates

Moving end with bore  
(outer link) 060...1(PZ)



060...2(PZ) Fixed end  
with pin (inner link)

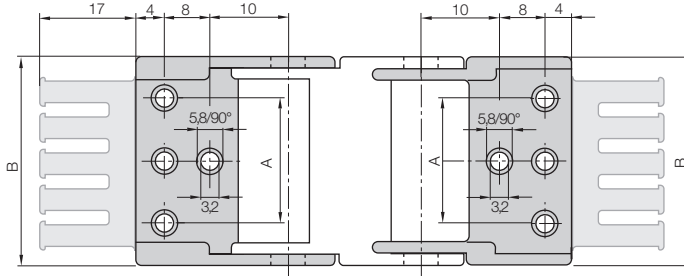
Possible installation conditions for assembled mounting brackets ▶ Order example "preassembled" below

060...1(PZ)

Moving end

060...2(PZ)

Fixed end



060.06.12 - 060.20.12: center bores only  
060.30.12 - 060.64.12: outer bores only

For E-Chain*	Part No. full set with tiwrap plate	Part No. full set without tiwrap plate	Number of teeth	Dim. A [mm]	Dim. B [mm]
06.06. ▶	060.06.12 PZ	060.06.12	1	-	12,5
06.10. ▶	060.10.12 PZ	060.10.12	1	-	16,5
06.16. ▶	060.16.12 PZ	060.16.12	2	-	22,5
06.20. ▶	060.20.12 PZ	060.20.12	2	-	27,0
06.30. ▶	060.30.12 PZ	060.30.12	3	22	37,0
06.40. ▶	060.40.12 PZ	060.40.12	4	32	47,0
06.50. ▶	060.50.12 PZ	060.50.12	5	42	57,0
06.64. ▶	060.64.12 PZ	060.64.12	6	56	71,0

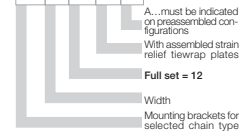
For the preassembled mode please add the index [A1]...[A4] e.g. 060.20.12 PZ [A1]

**Dimensions and order configurations**

Strain relief is possible on the moving end and/or the fixed end.

**Part No. structure**

060.20.12 PZ A1



Full set, for both ends:

060.20.12 PZ + tiwrap plate

Single-part order:

060.20.1 PZ + tiwrap plate

Mounting bracket with bore

060.20.2 PZ + tiwrap plate

Mounting bracket with pin



**Quicksnap** - the complete, detachable mounting unit, upon request  
Part No. 060.10.QS, Art. Nr. 060.16.QS,  
Part No. 060.20.QS, Art. Nr. 060.40.QS



**Quickfix** - mounting bracket with dowel, upon request

**Additional Features**

Phone +49- (0) 22 03-96 49-800  
Fax +49- (0) 22 03-96 49-222



▶ page 5.9