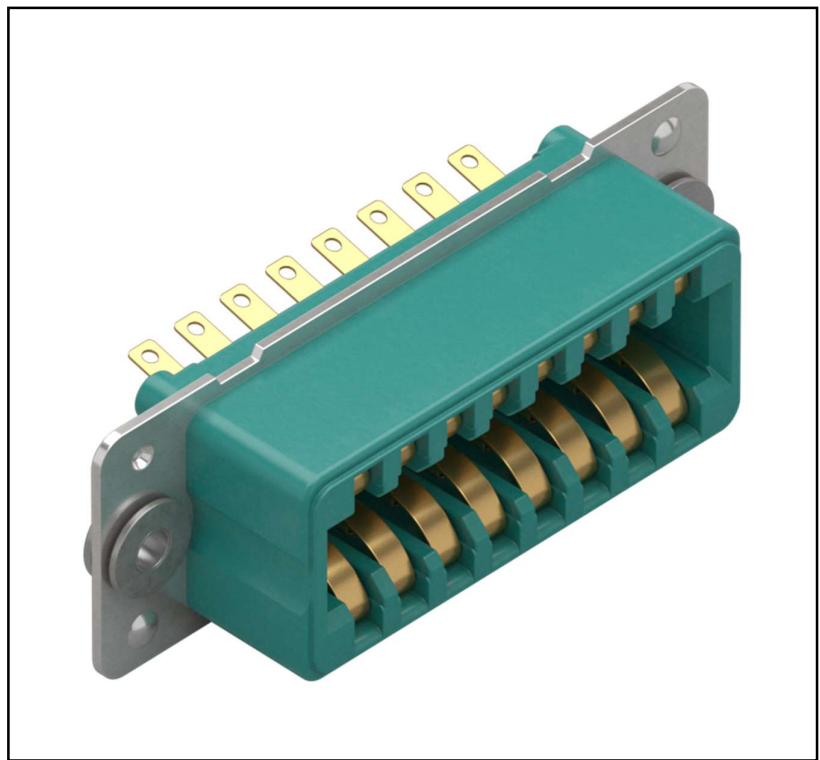


Features

- Rugged construction
- Blind-mate, 180° polarized pre-mating insulator
- Low mating engagement force
- Excellent current carrying characteristics
- Available in four sizes with 8, 16, 24 and 32 contacts
- 5 A current rating, continuous across all contacts
- Gold plated contacts
- Working voltage 800 V DC or AC peak
- Operating temperature range -55°C to +125°C
- UL-94 V-0 rated flame-retardant mouldings

RS PRO, 16 way, Female Connector

RS Stock No.: 0434498



RS Professionally Approved Products bring to you professional quality parts across all product categories. Our product range has been tested by engineers and provides a comparable quality to the leading brands without paying a premium price.

Product Description

This heavy-duty rectangular rack and panel connector system is particularly suited for use in rugged conditions. Designed as a panel-mount connector, they feature a pre-mating, polarised insulator with integral float-mount bushes and low insertion force contacts which means the plug and socket will self-align. As a result, the connectors are ideally suited for inaccessible blind-mate applications for Line Removable Units (LRUs).

General Specifications

Insulators	Diallyl-Phthalate (DAP), UL-94 V-0 rated flame-retardant
Contact	Copper alloy plated hard acid gold
Mounting plates	Stainless Steel
Float-mount bushes	Mild steel bright nickel plate

Mechanical Specifications

Mechanical Operations	500
Insertion and withdrawal force per contact pair	2.25 N max / 0.75 N min
Climatic category	55/125/56

Electrical Specifications

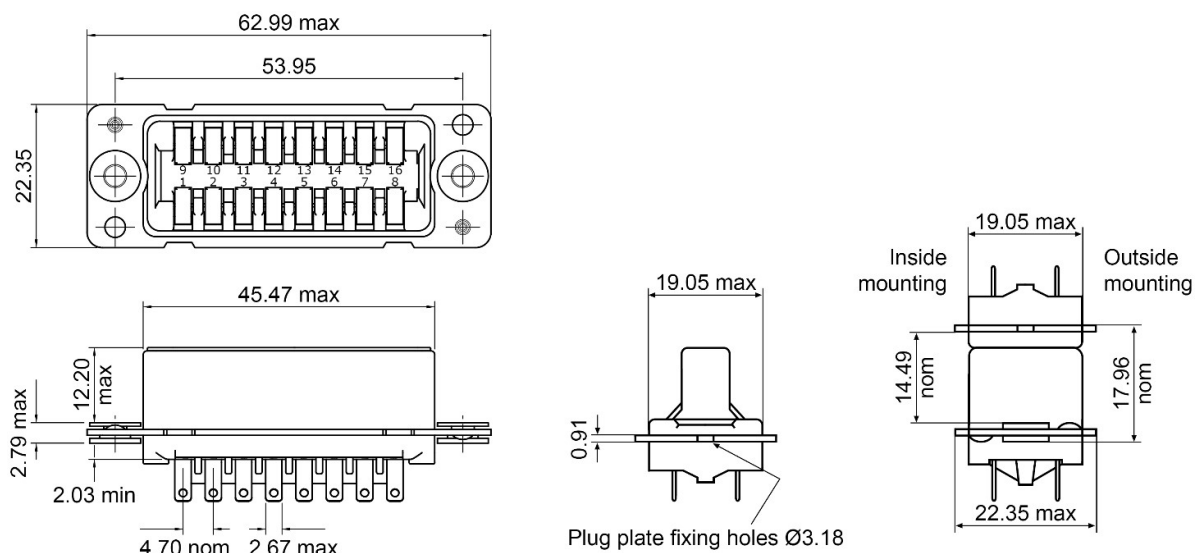
Maximum current rating	5 A all contacts simultaneously at 100°C
Working voltage DC or AC peak	800 V
Proof voltage DC or AC peak	3.5 kV
Contact resistance initially	5 mΩ max
Contact resistance after conditioning	10 mΩ max
Insulation resistance initially	10 ⁵ MΩ min
Insulation resistance after conditioning	10 ⁴ MΩ min
Number of ways	16, Female

Similar Products

Stock No.	Product Name	Number of ways
0434496	RS PRO, 8 way, Female Connector	8
0434499	RS PRO, 24 way, Female Connector	24
0434500	RS PRO, 32 way, Female Connector	32

Mating half part number: 0434492

Dimensions



Mounting Details

