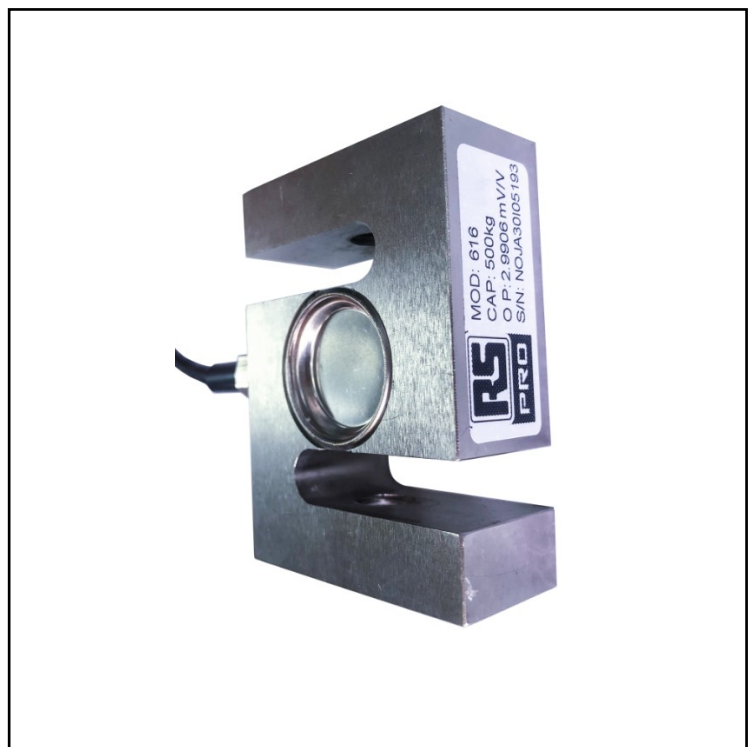


FEATURES

- Low profile
- Stainless steel construction with nickel plated treatment
- Capacity: 500kg
- Easy to install, stable & reliable

RS PRO Stainless Steel S Beam Tension Load Cell

RS Stock No.: 204-2764



RS Professionally Approved Products bring to you professional quality parts across all product categories. Our product range has been tested by engineers and provides a comparable quality to the leading brands without paying a premium price.

Load Cells

Product Description

S Beam Load Cell 616 offers a compact design for platforms, silos, or scales. The tension Load Cell has a wide range of capacities from to 500kg, comes in steel alloy construction.

Capacities: 500kg

Material: Stainless steel

Dimension: 54*25.4*76mm

Rated Output: 2.0mV/V/3.0Mv/v

Protection Class: IP66

Applications

Hopper scales, Crane scales, Tension control and machine testing, batching systems, blending & mixing systems, belt scales, etc.

Electrical Specifications

Rated Capacities	500kg
Accuracy Class	C3
Rated Output	2.0±0.002 mV/V
Zero Balance	±0.0200 mV/V
Non-linearity	0.02%R.O.
Hysteresis	0.02%R.O.
Repeatability	0.01 %R.O.
30mins Creep	0.02%R.O.
30mins Return	0.02%R.O.
Safe Overload	120 %R.O.
Ultimate Overload	200 %R.O.
Temperature Effect on Output	0.002 %R.O./°C
Temperature Effect on Zero	0.002 %R.O./°C
Input Impedance	385±10 Ω
Output Impedance	350±3 Ω
Insulation Impedance	≥5000 MΩ/(50VDC)

Load Cells

Recommended Excitation	10 VDC
Maximum Excitation	10 VDC
Operating Temperature Range	-20~60 °C
Construction	Steel Alloy
Cable	φ5.4×5m
Mode of Connection	Red (EXC+) , Black (EXC-) , Green (SIG+) , White (SIG-)

Protection Category

Waterproof class	IP66
------------------	------

Classification

eCl@ss (Version)	C3
------------------	----

Approvals

Declarations	ROHS, OIML
--------------	------------

Additional Information

Custom Tariff Number	84239000
----------------------	----------