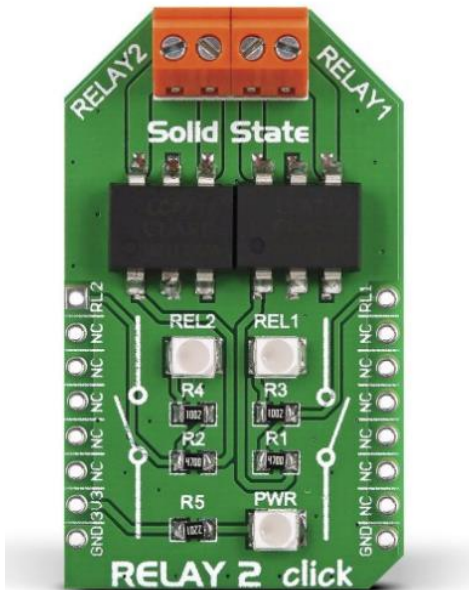


Relay2 click



PID: MIKROE-1899

RS Product Code: [136-0737](#)

Relay 2 click carries two LCA717 single-pole, OptoMOS® solid state relays and two screw terminals for connecting the wiring. These relays have a load current of 2A, low maximum on-resistance of just 0.15 Ohms, and a blocking Voltage of 30V. The LCA717 have optically coupled outputs that use the patented OptoMOS technology. Solid state relays enable fast, silent and bounce-free switching. Each relay is coupled with an on board signal LED. The board is designed to use a 3.3V power supply only.

Specification

Product Type	Relay
Applications	Turn things On or Off, like lights, motors, and similar devices that don't exceed the specified voltage/current levels
On-board modules	Two LCA717 single-pole, OptoMOS® solid state relays
Key Features	Maximum voltage 30V; Max current 2A. Status indicator LEDs
Key Benefits	Fast, silent and bounce-free switching. High reliability
Interface	GPIO
Power Supply	3.3V
Compatibility	mikroBUS
Click board size	M (42.9 x 25.4 mm)
Weight	33g

Downloads

[Relay 2 click Examples](#)

[Relay 2 click User Manual](#)