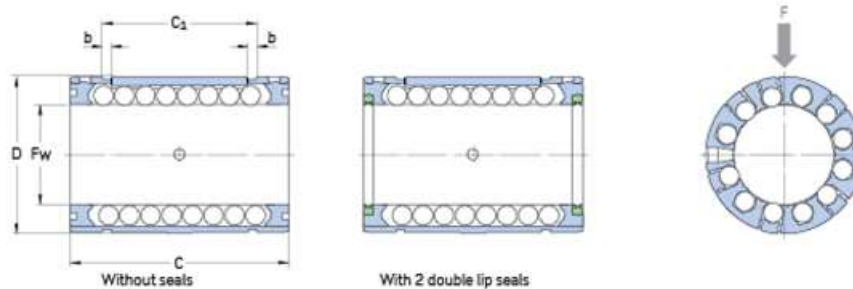
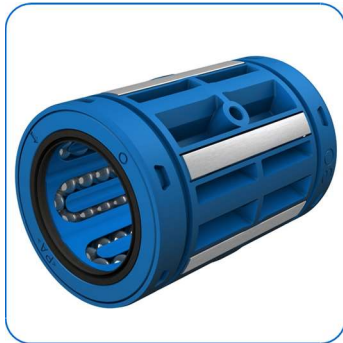


Product data sheet

LBCR 16 D-2LS

Linear ball bearing with 2 seals, closed design



Replacing LBCR 16 A-2LS

| | |
|----------------|------|
| Fw: | 16 |
| D[mm]: | 26 |
| C[mm]: | 36 |
| C1[mm]: | 24.6 |
| b[mm]: | 1.3 |
| Ball rows [#]: | 5 |
| Cmin[N]: | 1080 |
| Cmax[N]: | 1600 |
| C0min[N]: | 800 |
| C0max[N]: | 1290 |
| vmax[m/s]: | 5 |

Date: 13/05/2020

The contents of this report are the copyright of the publisher and may not be reproduced (even extracts) unless permission is granted. Every care has been taken to ensure the accuracy of the information contained in this report but no liability can be accepted for any loss or damage whether direct, indirect or consequential arising out of the use of the information contained herein.

Product data sheet

LBCR 16 D-2LS

Linear ball bearing with 2 seals, closed design

| | |
|--------------------------|-------|
| amax[m/s ²]: | 100 |
| Weight [kg]: | 0.026 |

Date: 13/05/2020

The contents of this report are the copyright of the publisher and may not be reproduced (even extracts) unless permission is granted. Every care has been taken to ensure the accuracy of the information contained in this report but no liability can be accepted for any loss or damage whether direct, indirect or consequential arising out of the use of the information contained herein.