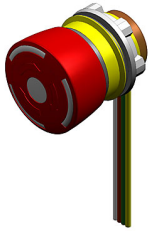


# EAO – Your Expert Partner for Human Machine Interfaces

84-5040.0040 - Emergency-stop switch complete, foolproof EN IEC 60947-5-5

## 84-5040.0040 - Emergency-stop switch complete, foolproof EN IEC 60947-5-5



*Attention: The preview is based on a sample product. This can differ from your current configuration.*

### Mounting

Mounting cut-out Design Ø 22.5 mm raised

### Front

Front dimension Ø 32 mm  
Front shape round

### Other Attributes

Weight 0.036 kg

### Operating-/Indication part

Lens material Plastic  
Lens colour red  
Lens profile Mushroom  
Lens optics opaque

### IP-Rating

Front protection IP 65

### Connection Method

Terminal Flat ribbon cable

### Actuator

Switching action Maintained

### Switching element

Switching voltage 250 V AC/DC  
Switching current 5 A  
Switching system Slow-make switching element  
Contacts 2 NC  
Contact material Gold

### Illumination

LED colour

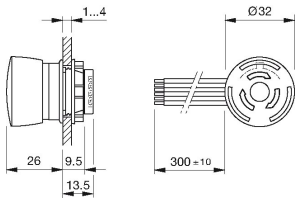
### Function

Emergency stop switch

# EAO – Your Expert Partner for Human Machine Interfaces

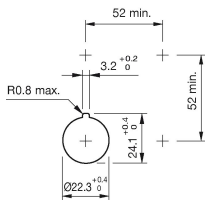
84-5040.0040 - Emergency-stop switch complete, foolproof EN IEC 60947-5-5

## Dimensions

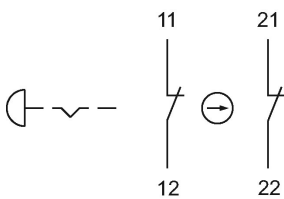


F1 = Flat ribbon cable

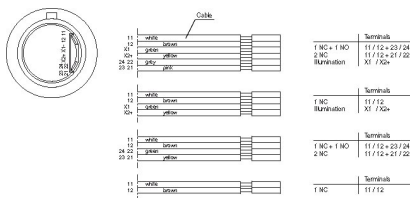
## Mounting cut-outs



## Wiring diagram



## Component layout



## Additional information

Twist to unlock clockwise

Position indication ring black

Application as per DIN EN ISO 13850 and EN 60204-1

Standard version: Flat ribbon-cable length 300 mm or plug-in terminal 2.8 x 0.5 mm

Other options on request: Customisation of flat ribbon-cable and connectors

## Legend

Contacts: NC = Normally closed, NO = Normally open