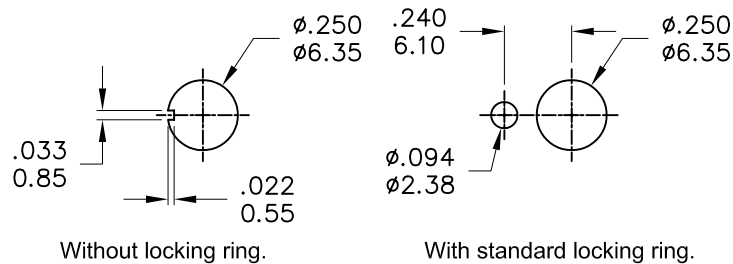


Model No.	POS.1	POS.2	POS.3
1MS1	ON	NONE	ON
Term. Comm.	2-3	N/A	2-1
SCHEMATIC			

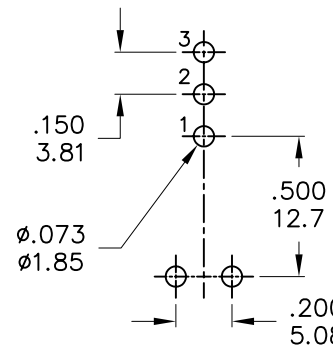
SWITCH FUNCTION

	PART NO.	PART NAME	Q'TY
1	MNU-1M01A	1/4 INCH NUTS	2
2	MNU-1M02	LOCKING RING	1
3	MNU-1M03	LOCKING WASHER	1

FILE NAME:HARDWARE-0002



PANEL MOUNTING



P.C. MOUNTING

SPECIFICATIONS

MECHANICAL LIFE: 40,000 make-and-break cycles.
CONTACT RESISTANCE: 10mΩ max. initial @ 2-4VDC
 100mA for both silver and gold plated contacts.
INSULATION RESISTANCE: 1,000MΩ min.
DIELECTRIC STRENGTH: 1,000 V RMS@sea level.
OPERATING TEMPERATURE: -30°C to 85°C.

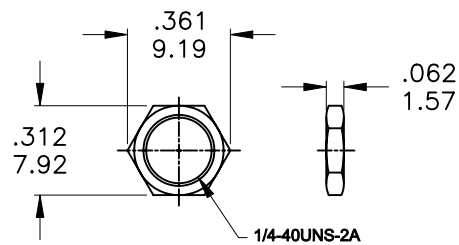
MATERIALS

CASE: Dially phthalate (DAP) (UL94v-0).
ACTUATOR: Brass,chrome plated.
BUSHING: Brass,nickel plated.
HOUSING: Stainless Steel.
TERMINAL/CONTACT: Silver or gold plated.
SWITCH SUPPORT: Brass , Tin plated.
RoHS: 2002/95/EC

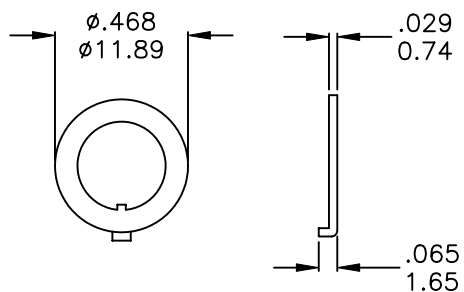


	CONTACT MATERIAL	TERMINAL PLATING	RATINGS
Q	Silver	Q = Silver	5 Amps @120 VAC or 28 VDC 2 Amps @250VAC
S		S = Silver,pure-tin	
C	Gold over Silver	C = Gold over silver	
K		K = Gold over silver,pure-tin	
R	Gold	R = Gold	0.4 Volt-Amps(VA) max. @20V max. (AC or DC)
G		G = Gold,pure-tin	

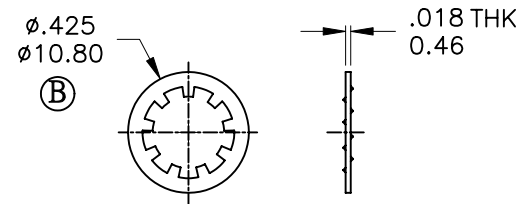
符號	原尺寸	修改後尺寸	變更日期	SCALE (比例): 3:2	TITLE 圖名	Miniature Toggle Switches	SIZE 圖紙	A4		
1	(A)			TOLERANCE (公差): 0.00 mm ± 0.25mm 0.0 mm ± 0.40mm ANGULAR : ± 5° FILE NAME : 1MSP1824	DWG NO. 圖號	1MS1T2B3M7QES-5	UNIT 單位	inch mm		
2	(B)				REV. 版本	A	DATE 日期	JAN - 13 - 2010	SHEET 張數	1 of 1
3	(C)				CHECKED BY 審核	RICHARD		DRAWN BY 製圖	IRENE	
4	(D)									
5	(E)									



MNU-1M01A



MNU-1M02



MNU-1M03

	PART NO.	PART NAME	Q'TY
1	MNU-1M01A	1/4 INCH NUTS	2
2	MNU-1M02	LOCKING RING	1
3	MNU-1M03	LOCKING WASHER	1



符號	原尺寸	修改後尺寸	變更日期	SCALE (比例) : 3 : 2	TITLE 圖名	HARDWARE		SIZE 圖紙	A4	
1	(A)	版本變更	DEC-27-2007	TOLERANCE (公差) : 0.00 mm ± 0.25mm 0.0 mm ± 0.40mm ANGULAR : ± 5° FILE NAME : HARDWARE-0002	DWG NO. 圖號	1/4 IN BUSHING PART		UNIT 單位	inch mm	
2	(B)	10.21(.402)	JUN-14-2010		REV. 版本	C	DATE 日期	DEC - 24 - 2007	SHEET 張數	1 of 1
3	(C)				CHECKED BY 審核	RICHARD		DRAWN BY 製圖	FION	
4	(D)									
5	(E)									