

381166923	DATA SHEET	
Valid from: 06.11.2024	EPIC® M12 FEA4F-0.5-M16	

Description

- Sensor/Actuator flush-type socket, M12 screw connection, 4-pole, A-coding
- Front/screw mounting with M16 thread, 0.5m conductors, 4 x 22AWG



General characteristics

Design	Panel mount M12, female contacts
Connection	Screw connection
Coding	A-Coding
Number of poles	4
Product standard	DIN EN 61076-2-101
Protection class	IP 67
Temperature rating (operation)	-25 up to +85 °C (-13 up to +185 °F)
Mating cycles	≥ 100
Tightening torque, connector	0.4 up to 0.6 Nm
Tightening torque, counter-nut	3 up to 4 Nm

Electrical properties, connector

Rating voltage	250 V
Rating current	4 A
Overvoltage category	II
Pollution degree	3
Insulation resistance	≥ 100 MΩ
Contact resistance of connector	≤ 5 mΩ

Materials, connector

Contacts	Brass, gold plated
Contact holder	TPU GF
Connector shell	Zinc die-cast, nickel plated
Counter-nut M16x1,5	Brass, nickel plated
Inner overmold	Epoxi resin
Seal	FPM/FKM

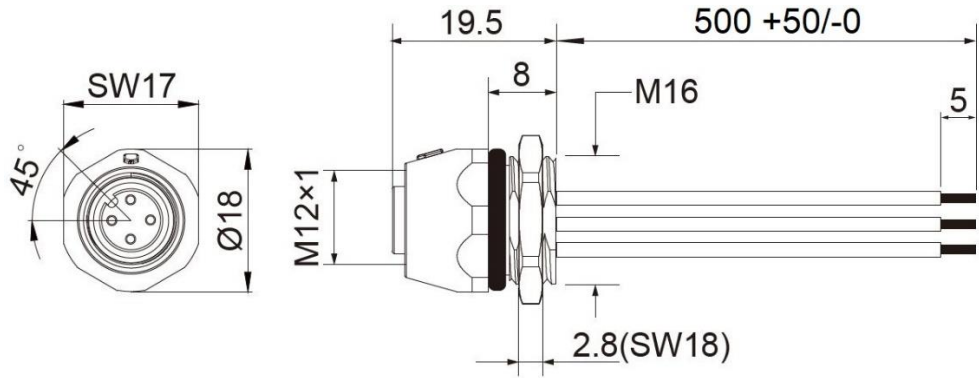
Single core

AWM style	1569
Material of conductor	Stranded copper wire, stripped zone tin plated
Material of core insulation	PVC
Conductor cross-section	22AWG
Color of cores	Brown (BN), White (WH), Blue (BU), Black (BK)

Creator: JUKL2/BU EPIC Released: VACH1/BU EPIC	Document: DB381166923EN Version: 00	Page 1 of 2
---	--	-------------

381166923	DATA SHEET	
Valid from: 06.11.2024	EPIC® M12 FEA4F-0.5-M16	

Technical drawings



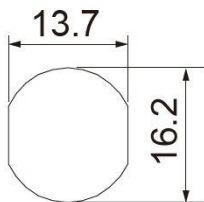
Pin diagram



Wire list

1	BN	
2	WH	
3	BU	
4	BK	

Panel cut-out



Maximum wall thickness is 3,5mm

Application range

Connection of enclosures and cabinets.

Note

The photographs are not to scale and are not detailed images of the respective products..

Creator: JUKL2/BU EPIC Released: VACH1/BU EPIC	Document: DB381166923EN Version: 00	Page 2 of 2
---	--	-------------