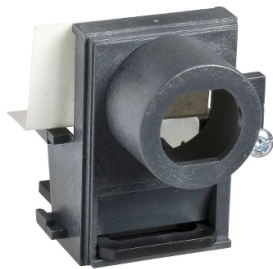


Product datasheet

Specifications



Ronis lock + adaptation kit - for NS630b..1600 - off position Locking - 2 key

33905

Main

Device short name	2 locks + adaptation kit
Product or component type	Lock + adaptation kit
Accessory / separate part category	Keylock accessory
Range compatibility	ComPact ComPact NS630b...1600

Complementary

Keylock destination	Circuit breaker
Number of locks	2
Type of keylock	Ronis
Number of key	1
Key locking position	Off
Locking options description	2 keylocks + 1 key Same keys
Accessory / separate part category	Spare part for ComPact NS630b...1600

Packing Units

Unit Type of Package 1	PCE
Number of Units in Package 1	1
Package 1 Height	6.0 cm
Package 1 Width	7.0 cm
Package 1 Length	7.0 cm
Package 1 Weight	344.0 g

Contractual warranty

Warranty	18 months
----------	-----------

Disclaimer: This documentation is not intended as a substitute for and is not to be used for determining suitability or reliability of these products for specific user applications


Environmental Data

Schneider Electric aims to achieve Net Zero status by 2050 through supply chain partnerships, lower impact materials, and circularity via our ongoing “Use Better, Use Longer, Use Again” campaign to extend product lifetimes and recyclability.


[Environmental Data explained >](#)

[How we assess product sustainability >](#)

Use Better

 Materials and Substances	
Packaging made with recycled cardboard	No
Packaging without single use plastic	No
EU RoHS Directive	Pro-active compliance (Product out of EU RoHS legal scope)
SCIP Number	4af84d10-022f-4451-abee-9cbe85d245d8
REACH Regulation	REACH Declaration
China RoHS Regulation	China RoHS declaration

Use Again

 Repack and remanufacture	
Halogen content performance	Product contains halogen above thresholds
Take-back	No