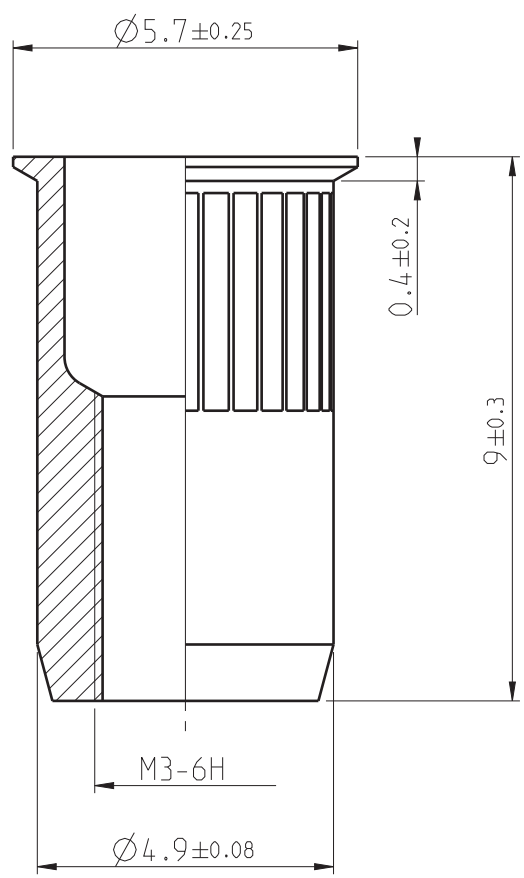


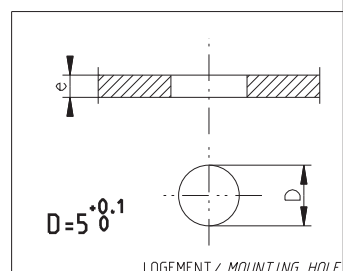
THIS DRAWING AND THE INTELLECTUAL PROPERTY RIGHTS ARE THE PROPERTY OF BÜLLHOFF-CAD SYSTEM : PRO-ENGINEER WILDFIRE 3.

CE PLAN APPARTIENT A LA SOCIETE BÜLLHOFF.IL NE PEUT ETRE COPIE, REPRODUIT OU COMMUNIQUE A DES TIERS SANS AUTORISATION.SYSTEME CAD : PRO-ENGINEER WILDFIRE 3.

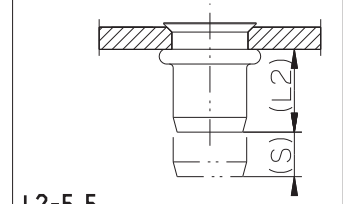
HIERARCHISATION/ CLASSIFICATION : △SR CpK ≥ 1.66. △1 CpK ≥ 1.47. △2 CpK ≥ 1.33. △3 CpK ≥ 1. △GC GAUGE CONTROL / CONTROLE AUX ATTRIBUTS.
 AUTRES DIMENSIONS NON SUJETTES A CAPABILITE/OTHER DIMENSIONS NOT SUBJECT TO CAPABILITY.



ISO 13715 ± 0.3



LOGEMENT / MOUNTING HOLE



L2=5.5

VUE SERTIE / INSTALLED POSITION



ECHELLE / SCALE 2/1

() = VALEUR INDICATIVE / INDICATIVE VALUE

10/02/11	SFR	NBL	Zn6K/Fe-->Zinc Clear Cr3 Zn6K/Fe-->Zinc Clear Cr3
DATE / DATE	NOM / NAME	VERIFIE PAR / CHECKED BY	DERNIERE MODIFICATION / LAST MODIFICATION

CE PRODUIT EST CONCU POUR ETRE SERTI SUR LES MATIERES SUIVANTES : **ACIER**
 THIS PRODUCT IS DESIGNED TO BE SET ON THE FOLLOWING MATERIALS : **STEEL**

CYCLE DE VIE / LIFE CYCLE:
Released

EFFORT DE POSE MIN SUR EPAISSEUR MAX / MIN SETTING LOAD ON MAX GRIP	(N): 3000	 LONGUEUR TARAUDAGE UTILE / COMPLETE THREAD LENGTH: 4.5MIN FR (BÜLLHOFF SPECIFICATION)	CHARGE D'EPREUVE / PROOFLOAD (N): 4000	 COUPLE DE SERRAGE MAX / MAX TORQUE ON SCREW (N.m): 1.2 PIECE IMMOBILISEE / PART HELD STATIONARY MR (BÜLLHOFF SPECIFICATION)
PLAGE DE SERTISSAGE / GRIP RANGE	e(mm): 0.5 A/TO 2		COURSE DE SERTISSAGE / STROKE	

MATIERE / MATERIAL: ACIER / STEEL	TRAITEMENT DE SURFACE / COATING: Zinc Clear Cr3	BÜLLHOFF	
--	--	-----------------	--

FINITION RENF. / TOP COAT: NO	LUBRIFICATION / LUBRICATION: NO	FAMILLE / FAMILY: RIVKLE® M3	
FORMAT / PAPER: A4	POIDS / WEIGHT: ~0.7 g	ECHELLE / SCALE: 8/1	DATE / DATE: 29/07/08
DESIGNATION: RF67 M 3 020		N° PLAN / DRAWING NUMBER: 34367030020	
TYPE: 02		REV.: B	