

DO NOT
SCALE FROM
THIS PRINT

No. OF POSITIONS
-02: 2 POSITIONS
-04: 4 POSITIONS
-06: 6 POSITIONS
-08: 8 POSITIONS

LEAD STYLE
-01

TAIL LENGTH
-01: FOR 1.57[.062] THICK PCB
(USE SUB-T-1M70-01-X)
-02: FOR 2.36[.093] THICK PCB
(USE SUB-T-1M70-02-X)

PACKAGING OPTION
-TR: TAPE AND REEL

OPTION
-LC: LOCKING CLIP
-RIGHT ANGLE

PLATING
-L: LIGHT SELECTIVE, 10 AU/50 NI
MIN ON CONTACT, TIN ON TAIL
-T: TIN, TIN ALL OVER

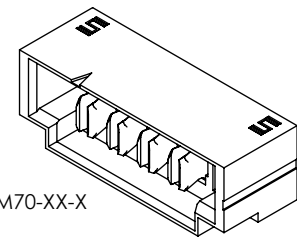
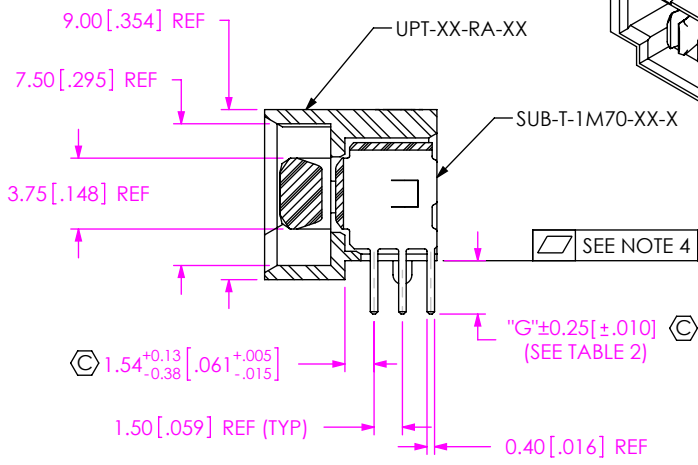
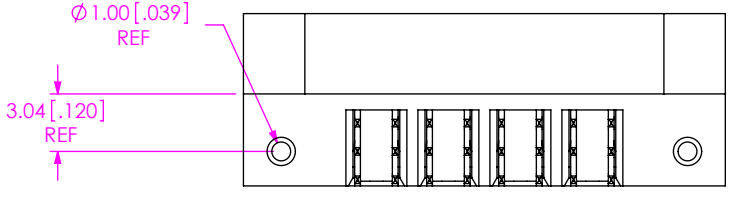
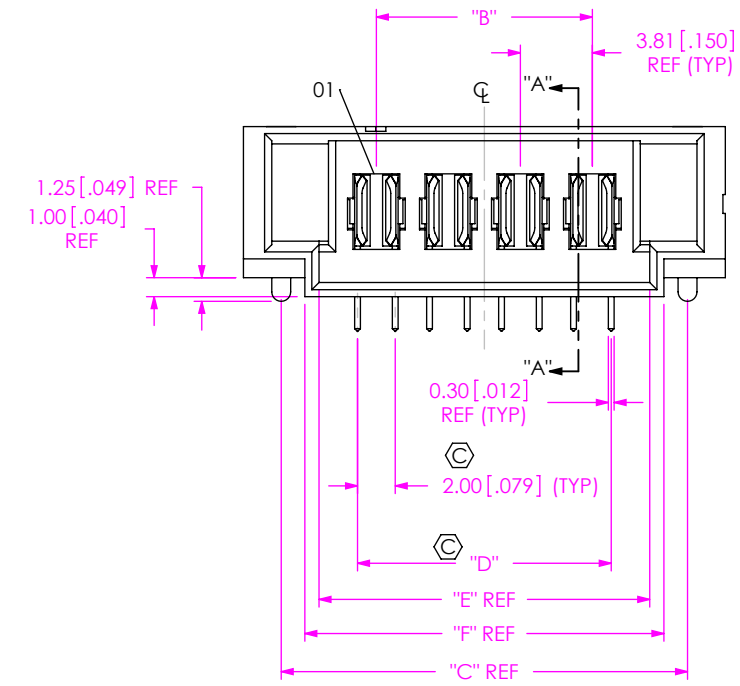
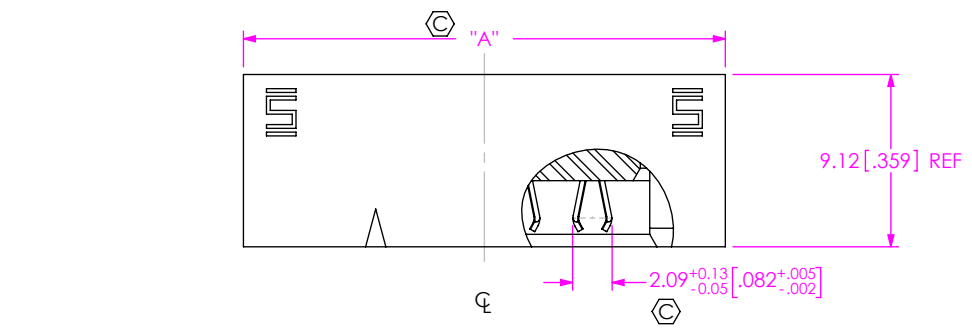


FIG 1
(UPT-04-01-X-RA-X SHOWN)

SECTION "A"- "A"

PART NUMBER	"A"	"B"	"C"	"D"	"E"	"F"
UPT-02-XX-X-RA-XX	17.88 [0.704]	3.81 [0.150]	13.88 [0.546]	5.81 [0.228]	9.88 [0.389]	11.38 [0.448]
UPT-04-XX-X-RA-XX	25.50 [1.004]	11.43 [0.450]	21.50 [0.846]	13.43 [0.529]	17.50 [0.689]	19.00 [0.748]
UPT-06-XX-X-RA-XX	33.12 [1.304]	19.05 [0.750]	29.12 [1.146]	21.05 [0.829]	25.12 [0.989]	26.62 [1.048]
UPT-08-XX-X-RA-XX	40.74 [1.604]	26.67 [1.050]	36.74 [1.446]	28.67 [1.029]	32.74 [1.289]	34.24 [1.348]

TAIL LENGTH	"G"	SUB-T-1M70-XX-X
-01	2.82 [0.111]	SUB-T-1M70-01-X
-02	3.58 [0.141]	SUB-T-1M70-02-X

- NOTES:
- ⊕ REPRESENTS A CRITICAL DIMENSION.
 - MAXIMUM BURR ALLOWANCE: 0.038[.0015]
 - MINIMUM PUSHOUT FORCE: 4.5N[1.0 LB].
 - MAXIMUM ALLOWABLE BOW: .15[.006].
 - MINIMUM -LC PULL OUT FORCE: 2.23 N [0.5LB]

UNLESS OTHERWISE SPECIFIED, DIMENSIONS ARE IN MILLIMETERS
TOLERANCES ARE:
DECIMALS ANGLES
X.X: ±0.3 [0.1]
X.XX: ±0.13 [0.005]
X.XXX: ±0.051 [0.0020]

PROPRIETARY NOTE
THIS DOCUMENT CONTAINS CONFIDENTIAL AND PROPRIETARY INFORMATION AND ALL DESIGN, MANUFACTURING, REPRODUCTION, USE, PATENT RIGHTS AND SALES RIGHTS ARE EXPRESSLY RESERVED BY SAMTEC, INC. THIS DOCUMENT SHALL NOT BE DISCLOSED, IN WHOLE OR PART, TO ANY UNAUTHORIZED PERSON OR ENTITY NOR REPRODUCED, TRANSFERRED OR INCORPORATED IN ANY OTHER PROJECT IN ANY MANNER WITHOUT THE EXPRESS WRITTEN CONSENT OF SAMTEC, INC.

MATERIAL: DO NOT SCALE DRAWING SHEET SCALE: 1:0.4
INSULATOR: LCP, COLOR: BLACK UL 94 VO
TERMINAL: BeCu
LOCKING CLIP: PHOS BRONZE

samtec
520 PARK EAST BLVD, NEW ALBANY, IN 47150
PHONE: 812-944-6733 FAX: 812-948-5047
e-Mail: info@SAMTEC.com code: 55322

DESCRIPTION: UPT-RA, ASSEMBLY
DWG. NO. UPT-XX-01-XX-X-RA-XX-XX
BY: B RAY 10/01/2008 SHEET 1 OF 2

F:\DWG\MISC\MKTG\UPT-XX-01-XX-X-RA-XX-XX-MKT.SLDDRW

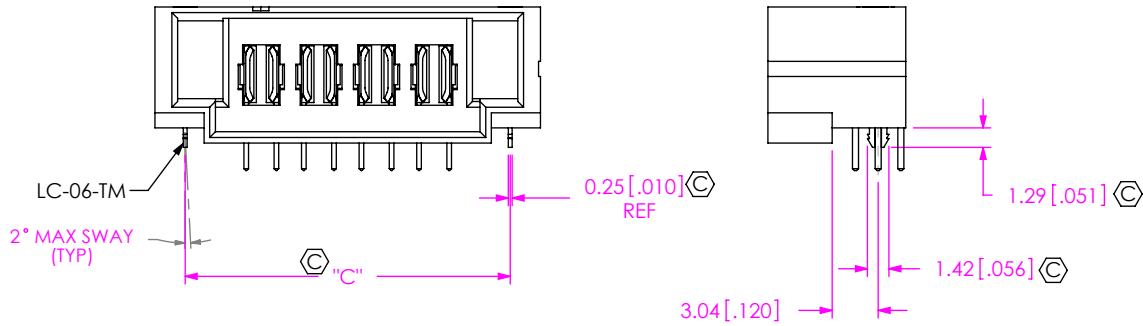


FIG 2
(UPT-04-01-X-RA-X-LC SHOWN)
(SAME AS FIG 1, DIFFERENT AS SHOWN)

TABLE 3		
PLATING	POWER PIN CONTACT AREA	POWER PIN TAIL
-L	LIGHT GOLD	MATTE TIN
-T	MATTE TIN	MATTE TIN

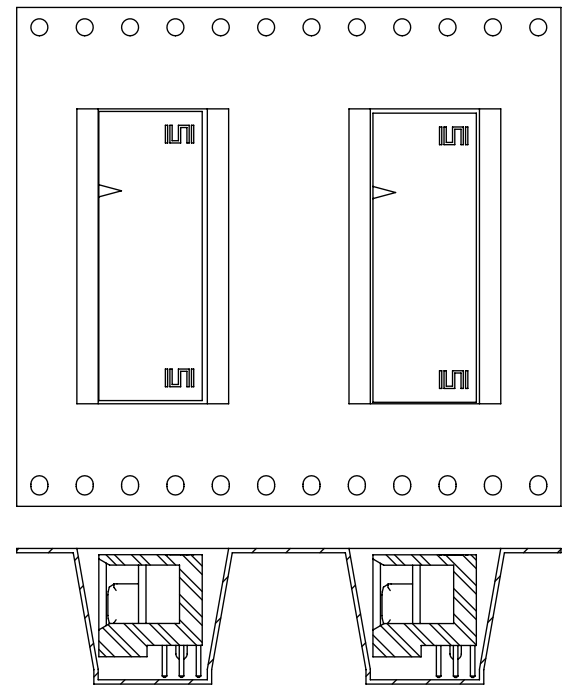
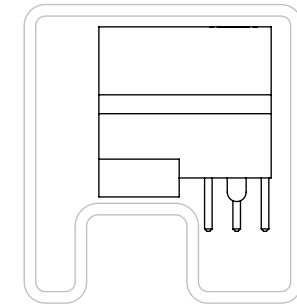


FIG 3
-TR: PACKAGING VIEW
TAPE AND REEL



PACKAGING TUBE VIEW

TUBE TABLE		
TAIL LENGTH	TUBE	PLUG
ALL	PT-1-24-01-40	TP-13

PROPRIETARY NOTE

THIS DOCUMENT CONTAINS CONFIDENTIAL AND PROPRIETARY INFORMATION AND ALL DESIGN, MANUFACTURING, REPRODUCTION, USE, PATENT RIGHTS AND SALES RIGHTS ARE EXPRESSLY RESERVED BY SAMTEC, INC. THIS DOCUMENT SHALL NOT BE DISCLOSED, IN WHOLE OR PART, TO ANY UNAUTHORIZED PERSON OR ENTITY NOR REPRODUCED, TRANSFERRED OR INCORPORATED IN ANY OTHER PROJECT IN ANY MANNER WITHOUT THE EXPRESS WRITTEN CONSENT OF SAMTEC, INC.

DO NOT SCALE DRAWING

SHEET SCALE: 1:0.333333



520 PARK EAST BLVD, NEW ALBANY, IN 47150
PHONE: 812-944-6733 FAX: 812-948-5047
e-Mail: info@SAMTEC.com code: 55322

DESCRIPTION: UPT-RA, ASSEMBLY

DWG. NO. UPT-XX-01-XX-X-RA-XX-XX

BY: B RAY 10/01/2008 SHEET 2 OF 2